


Stairrods
 UK Limited

Luxury Carpet Accessories
 Rods Trims & Shims



Royale



Polished Brass
(Shown in Beaumont)

The Royale range of stair rods are triangular brass stair rods in the traditional style, designed specifically to give your staircase a finishing touch that will get noticed. Suitable for either runner stair carpets or fully fitted, the Royale are made to measure and will give any stair case an imposing, classical look.



Antique Brass
(Shown in Louis)



Antique Bronze
(Shown in Vue)

The Royale range are available in the following options:
Choice of finials: Louis, Beaumont and Vue.
Choice of finishes: Antique Brass, Antique Bronze, Polished Brass, Satin Brass, Chrome, Brushed Chrome, Polished Nickel, Satin Nickel, Pewter and Black.



Satin Brass
(Shown in Beaumont)



Chrome
(Shown in Louis)



Brushed Chrome
(Shown in Vue)



Polished Nickel
(Shown in Beaumont)



Satin Nickel
(Shown in Louis)



Pewter
(Shown in Vue)



Black
(Shown in Beaumont)

Eastern Promise



Polished Brass
(Shown in Cairo & Plain Rod)

Eastern Promise are heavy gauge hollow stair rods in 5/8" (16mm) diameter and have a range of imposing finials available. Perfect for a grand staircase but equally at home on a standard staircase. With the various combinations of rod and finial style you can achieve the perfect finish for your staircase.



Antique Brass
(Shown in Dubai & Spiral Rod)



Antique Bronze
(Shown in Dune & Reeded Rod)

Choice of finials: Dubai, Cairo and Dune.
Choice of rod type: Plain, Reeded or Spiral.

Choice of finishes: Antique Brass, Antique Bronze, Polished Brass, Satin Brass, Chrome, Brushed Chrome, Polished Nickel, Satin Nickel, Pewter and Black.



Satin Brass
(Shown in Cairo & Spiral Rod)



Chrome
(Shown in Dubai & Reeded Rod)



Brushed Chrome
(Shown in Dune & Plain Rod)



Polished Nickel
(Shown in Dubai & Plain Rod)



Satin Nickel
(Shown in Cairo & Reeded Rod)



Pewter
(Shown in Dune & Spiral Rod)



Black
(Shown in Cairo & Plain Rod)

Premier Rods



Polished Brass
(Shown in Lancaster)



Antique Bronze
(Shown in Chatsworth)



Chrome
(Shown in Woburn)



Satin Nickel
(Shown in Balmoral)

Our Premier range stair rods are the epitome of quality and style and they are manufactured using traditional methods. The finial is lathed onto the rods meaning every rod is one piece, made to measure and unique. The rods are then polished and lacquered to the highest standard.

Premier range stair rods come with the following options.

Choice of Six finials: Hanover, Lancaster, Windsor, Chatsworth, Balmoral and Woburn.

Choice of standard finishes: Antique Brass, Antique Bronze, Polished Brass, Satin Brass.

Choice of specialised finishes: Brushed Chrome, Chrome, Pewter, Polished Nickel, Satin Nickel and Black.



Antique Brass
(Shown in Balmoral)



Satin Brass
(Shown in Hanover)



Polished Nickel
(Shown in Lancaster)



Brushed Chrome
(Shown in Windsor)



Pewter
(Shown in Chatsworth)



Black
(Shown in Hanover)



Polished Brass
(Shown in Arrow & Plain Rod)

The Vision stair rods feature modern finial designs. The rods are heavy gauge hollow 1/2" - 12.5mm diameter tube with a choice of Sphere, Piston and Arrow finials. They were designed with an engineered look to complement contemporary stair cases and carpet designs. They are a great choice for those looking for something different to the norm.



Antique Brass
(Shown in Piston & Reeded Rod)



Antique Bronze
(Shown in Sphere & Spiral Rod)

The Vision range are available in the following options:
Choice of finials: Arrow, Sphere & Piston.
Choice of rod type: Plain, Reeded or Spiral.
Choice of finishes: Antique Brass, Antique Bronze, Polished Brass, Satin Brass, Chrome, Brushed Chrome, Polished Nickel, Satin Nickel, Pewter and Black.



Satin Brass
(Shown in Arrow & Reeded Rod)



Chrome
(Shown in Piston & Spiral Rod)



Brushed Chrome
(Shown in Sphere & Plain Rod)



Polished Nickel
(Shown in Arrow & Spiral Rod)



Satin Nickel
(Shown in Piston & Plain Rod)



Pewter
(Shown in Sphere & Reeded Rod)



Black
(Shown in Arrow & Plain Rod)

Crystal



Polished Brass
(Shown in Amber & Plain Rod)



Antique Bronze
(Shown in Rose & Reeded Rod)



Chrome
(Shown in Amber & Spiral Rod)



Satin Nickel
(Shown in Sky & Spiral Rod)

Our Crystal range feature a finely cut crystal which catches the light and creates a dramatic effect. The rod itself is tubular and 1/2" diameter. All finial and rod colours can be mixed and matched. As an example, matching an amber crystal with an antique brass rod gives a period look, while a blue crystal on a satin nickel rod creates a modern, stylish look.

Crystal range stair rods come with the following options:

Choice of finials: Rose, Amber, Rainbow and Sky.

Choice of rod type: Plain, Reeded or Spiral.

Choice of finishes: Antique Brass, Antique Bronze, Polished Brass, Satin Brass, Chrome, Brushed Chrome, Polished Nickel, Satin Nickel, Pewter and Black.



Antique Brass
(Shown in Rainbow & Spiral Rod)



Satin Brass
(Shown in Sky & Plain Rod)



Polished Nickel
(Shown in Rose & Plain Rod)



Brushed Chrome
(Shown in Rainbow & Reeded Rod)



Pewter
(Shown in Amber & Reeded Rod)



Black
(Shown in Rainbow & Plain Rod)

Country



Polished Brass
(Shown in Arran & Plain Rod)



Antique Bronze
(Shown in Bordeaux & Spiral Rod)



Chrome
(Shown in Arran & Reeded Rod)



Satin Nickel
(Shown in Sherwood & Plain Rod)



Brushed Chrome
(Shown in Balladeer & Spiral Rod)



Pewter
(Shown in Arran & Spiral Rod)



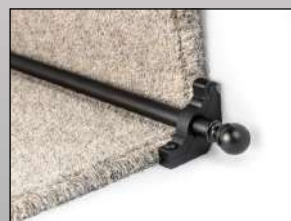
Antique Brass
(Shown in Balladeer & Reeded Rod)



Satin Brass
(Shown in Sherwood & Plain Rod)



Polished Nickel
(Shown in Bordeaux & Plain Rod)



Black
(Shown in Balladeer & Plain Rod)

Our Country range offers a wealth of options. Manufactured using traditional methods they combine the quality of brass with versatility and style. Designed for a range of applications, our Country range stair rods are suitable for both fully fitted and runner carpets in locations ranging from grand hotels to country cottages.

Country range stair rods come with the following options:

Choice of finials: Sherwood, Balladeer, Bordeaux and Arran.

Choice of rod type: Plain, Reeded or Spiral.

Choice of finishes: Antique Brass, Antique Bronze, Polished Brass, Satin Brass, Chrome, Brushed Chrome, Polished Nickel, Satin Nickel, Pewter, and Black.

Tudor



Polished Brass
(Shown in Light)



Antique Bronze
(Shown in Light)



Chrome
(Shown in Dark)



Satin Nickel
(Shown in Light)

Our Tudor range stair rods capture the style of classical wooden stair rods.

These stair rods are made from the finest hardwood and are available in light oak or dark oak finishes. Tudor range stair rods come with solid brass tips and elegant brackets, making them a stylish alternative to our solid brass stair rods ranges.

The hard wood we use will vary in grain pattern and shade.

Tudor range Stair Rods come with the following options:

Choice of wood finish: Light or Dark

Choice of bracket and end cap finish: Antique Brass, Antique Bronze, Polished Brass, Satin Brass, Chrome, Brushed Chrome, Polished Nickel, Satin Nickel, Pewter and Black.



Antique Brass
(Shown in Dark)



Satin Brass
(Shown in Dark)



Brushed Chrome
(Shown in Light)



Polished Nickel
(Shown in Dark)



Pewter
(Shown in Dark)



Black
(Shown in Light)

Blacksmith



Black
(Shown in Ball & Normal Bracket)



Black
(Shown in Flat & Normal Bracket)

Our Blacksmith range of wrought iron stair rods have been designed by award winning Northumbrian Blacksmith Rodney Brittain.

Using traditional hot metalwork techniques, he has created a simplistic design that compliments a variety of interiors from rustic period properties to modern town houses.

The rods are made from 1/2" (12mm) solid steel, individually beaten into shape and then given a protective coating to prevent rust. Ideal for runners and fitted carpets.

Blacksmith Range stair rods come with the following options:

Choice of finials: Flat and Ball.

Choice of finish: Black or Steel.

Choice of bracket: Normal or Hinged.

Available in stock lengths from 24" (60.9cm) up to 48" (121.9cm) in 2" (5cm) increments.



Steel
(Shown in Ball & Hinged Bracket)



Steel
(Shown in Flat & Hinged Bracket)

Jubilee



Brass

Launched to celebrate the Queen's Jubilee in 2012, these rods look great and are ideal for retro fitting as they can be easily cut down to match the width of an existing carpet.

To save fitting time, the finials are already attached to the brackets.

Brackets can easily accommodate underlay and gripper, unlike other budget rods sold online.



Bronze

The Jubilee range are hollow 3/8" (9mm) diameter stair rods and are available in a selection of eight finishes.

Available colours: Brass, Antique, Bronze, Ivory, Chrome, Pewter, Satin Nickel and Black.



Antique



Ivory



Chrome



Pewter



Satin Nickel



Black

Homepride



Brass

Homepride stair rods provide a quick and easy way to add style to your stairs. These rods are anodised and are perfect for a retro fit to an existing stair carpet. To save fitting time, the finials are already attached to the brackets.



Antique



Bronze

The Homepride range are hollow 1/2" (12.5mm) diameter stair rods and are available in a selection of eight finishes. Available colours: Brass, Antique, Bronze, Ivory, Chrome, Pewter, Satin Nickel and Black.



Ivory



Chrome



Pewter



Satin Nickel



Black

Victorian Stair Clips



Polished Brass

In Victorian times, stair clips were a popular and fashionable accessory. However modern fitting methods sadly consigned them to history.

At Stairrods UK, we have revived this attractive product. Our stair clips are solid brass and we use traditional manufacturing methods to give them quality and authenticity. They will recreate the look of yesteryear and add a distinctive touch to your stairs.



Antique Brass



Brushed Chrome

Victorian Stair Clips are available in the following finishes: Polished Brass, Antique Brass, Brushed Chrome, Satin Brass, Chrome, Polished Nickel, Satin Nickel, Pewter and Black.



Satin Brass



Chrome



Polished Nickel



Satin Nickel



Pewter



Black

Easyshims



Easyshim 6mm



Easyshim 9mm

We have the ideal product designed to overcome the difference in heights between flooring - a problem that exists in almost every home. Carpets can be ramped up to 30mm to give a smooth transition which is ideal for wheelchair access. You can also search “Stairrods Easyshims” on Youtube to see a complete fitting guide.

Easyshims are for use when installing carpet next to hardwood, ceramic tile, stone and marble floors. They give a flush transition in doorways when there is a difference in height between the surface in one room and another.

When having carpet fitted, ask your fitter for Easyshims. Any height differences between flooring are smoothed out in a subtle way.



Easyshim 12mm



Easyshim 15mm



DoubleZ



Polished Brass



Antique Bronze
(Shown as Z Bar)



Chrome



Satin Nickel
(Shown as Z Bar)

The Premier DoubleZ™9 is the perfect solution for joining standard pile carpets, but it does more. Easily converted into a Z bar it can now be used to transition between carpet and laminate, carpet to stone and other hard floors. As a Z bar it allows the laminate to float when used for carpet to laminate.

Choice of standard finishes: Antique Brass, Antique Bronze, Polished Brass, Satin Brass.

Choice of specialised finishes:

Brushed Chrome, Chrome, Pewter, Polished Nickel, Satin Nickel and Black.

Choice of length: 90cm (36"), 180 (71") and 270cm (106").

Also Available

DoubleZ™4 for thinner carpets.

DoubleZ™13 for thicker carpets.



Antique Brass
(Shown as Z Bar)



Satin Brass



Brushed Chrome
(Shown as Z Bar)



Polished Nickel



Pewter



Black
(Shown as Z Bar)

Slim D & Slim Z



Polished Brass
(Shown in Slim D)

Our New Premier Slim D is the slimmest trim on the market offering a discreet junction for carpet to carpet. An accompanying Premier Slim Z offers the same attributes for carpet to hard flooring which requires limited expansion. You can also search “Stairrods Slim D” on Youtube to see a complete fitting guide.



Antique Brass
(Shown in Slim Z)



Antique Bronze
(Shown in Slim D)

Choice of standard finishes: Antique Brass, Antique Bronze, Polished Brass, Satin Brass.

Choice of specialised finishes:

Brushed Chrome, Chrome, Pewter, Polished Nickel, Satin Nickel and Black.

Choice of length: 90cm (36"), 180cm (71") and 270cm (106").



Satin Brass
(Shown in Slim Z)



Chrome
(Shown in Slim D)



Brushed Chrome
(Shown in Slim Z)



Polished Nickel
(Shown in Slim D)



Satin Nickel
(Shown in Slim Z)



Pewter
(Shown in Slim D)



Black
(Shown in Slim Z)

Single



Polished Brass

The Premier Single 9 is a product suitable for use as an attractive carpet edge used when the carpet edge is over vinyl or in a situation where there is no flooring i.e. If the carpet ends on floorboards. The Single 9 will give you an attractive, clean finish to your flooring.



Antique Brass



Antique Bronze

Choice of standard finishes: Antique Brass, Antique Bronze, Polished Brass, Satin Brass.

Choice of specialised finishes:

Brushed Chrome, Chrome, Pewter, Polished Nickel, Satin Nickel and Black.

Choice of length: 90cm (36"), 180cm (71") and 270cm (106").

Also Available

Single 4 for thinner carpets.

Single 13 for thicker carpets.



Satin Brass



Chrome



Brushed Chrome



Polished Nickel



Satin Nickel

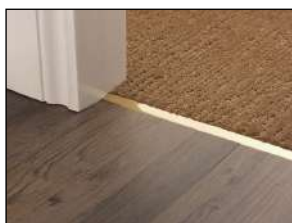


Pewter



Black

Square



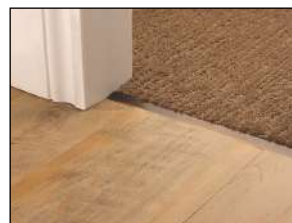
Polished Brass

The Premier Square is a product suitable for use as an attractive carpet edge when the carpet is butted up to a tile, wood or stone floor. In these situations the Square will give you an attractive, clean finish to your flooring.

Choice of standard finishes: Antique Brass, Antique Bronze, Polished Brass, Satin Brass.

Choice of specialised finishes:

Brushed Chrome, Chrome, Pewter, Polished Nickel, Satin Nickel and Black. Choice of length: 90cm (36"), 180cm (71") and 270cm (106").



Antique Brass



Antique Bronze



Satin Brass



Chrome



Brushed Chrome



Polished Nickel



Satin Nickel



Pewter



Black

Covers

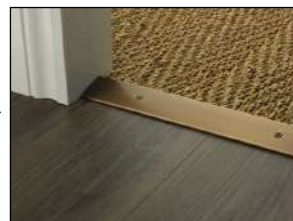


Polished Brass
(Shown as Cover 30)

The Premier Trim Cover is a screw down product for almost every transition: carpet to carpet, carpet to hard floor, vinyl to laminate, carpet to stone, the list is endless. A truly universal product.

The Premier Cover will also ramp up to a 10mm edge.

When fitted the fixing screws remain visible.



Antique Brass
(Shown as Cover 38)



Antique Bronze
(Shown as Cover 55)

Choice of profile: 30mm, 38mm or 55mm.

Choice of standard finishes: Antique Brass, Antique Bronze, Polished Brass, Satin Brass.

Choice of specialised finishes:

Brushed Chrome, Chrome, Pewter, Polished Nickel, Satin Nickel and Black.

Choice of length: 90cm (36"), 180 (71") and 270cm (106").



Satin Brass
(Shown as Cover 30)



Chrome
(Shown as Cover 38)



Brushed Chrome
(Shown as Cover 55)



Polished Nickel
(Shown as Cover 30)



Satin Nickel
(Shown as Cover 38)



Pewter
(Shown as Cover 55)



Black
(Shown as Cover 38)

Posh



Polished Brass
(Shown as Posh 30)

The Premier Posh range of products are suitable for all floor coverings be it carpet, vinyl, laminate, stone or any combination of these.

Manufactured from solid brass with three profile widths including a self adhesive inlay strip to cover the fixing screws. The Posh will give you an attractive, clean finish to your flooring.



Antique Brass
(Shown as Posh 38)



Antique Bronze
(Shown as Posh 55)

Choice of profile: 30mm, 38mm or 55mm.

Choice of standard finishes: Antique Brass, Antique Bronze, Polished Brass, Satin Brass.

Choice of specialised finishes: Brushed Chrome, Chrome, Pewter, Polished Nickel, Satin Nickel and Black.

Choice of length: 90cm (36"), 180 (71") and 270cm (106").



Satin Brass
(Shown as Posh 30)



Chrome
(Shown as Posh 38)



Brushed Chrome
(Shown as Posh 55)



Polished Nickel
(Shown as Posh 30)



Satin Nickel
(Shown as Posh 38)



Pewter
(Shown as Posh 55)



Black
(Shown as Posh 38)



Floating Covers



Polished Brass
(Shown as 20mm)

The Premier Floating Covers are the perfect solution for LVT and laminate installations where either one or both surfaces float. Can also be used on 'Stick Down' flooring. Suitable for level transitions. Ideal for use on under floor heating as it is a stick down product. Only suitable for non porous surfaces.



Antique Brass
(Shown as 30mm)



Antique Bronze
(Shown as 40mm)

Choice of Profiles: 20mm, 30mm 40mm and 50mm.

Choice of standard finishes: Antique Brass, Antique Bronze, Polished Brass, Satin Brass.

Choice of specialised finishes: Brushed Chrome, Chrome, Pewter, Polished Nickel, Satin Nickel and Black.

Choice of length: 90cm (36"), 180 (71") and 270cm (106").



Satin Brass
(Shown as 50mm)



Chrome
(Shown as 20mm)



Brushed Chrome
(Shown as 30mm)



Polished Nickel
(Shown as 40mm)



Satin Nickel
(Shown as 50mm)



Pewter
(Shown as 20mm)



Black
(Shown as 30mm)



Vinyl Edges



Polished Brass
(Shown as 1mm)

The Premier Vinyl Edge 1mm & Vinyl Edge 2mm are the perfect solution for LVT and laminate installations where either one or both surfaces float. Suitable for where there is a 1mm or 2mm lift. Ideal for use on under floor heating as it is a stick down product.

Only suitable for non porous surfaces.

Choice of Profiles: 1mm or 2mm.

Choice of standard finishes: Antique Brass, Antique Bronze, Polished Brass, Satin Brass.

Choice of specialised finishes:

Brushed Chrome, Chrome, Pewter, Polished Nickel, Satin Nickel and Black.

Choice of length: 90cm (36"), 180cm (71") and 270cm (106").



Antique Brass
(Shown as 2mm)



Antique Bronze
(Shown as 1mm)



Satin Brass
(Shown as 2mm)



Chrome
(Shown as 1mm)



Brushed Chrome
(Shown as 2mm)



Polished Nickel
(Shown as 1mm)



Satin Nickel
(Shown as 2mm)



Pewter
(Shown as 1mm)



Black
(Shown as 2mm)



Two-Way Ramps



Polished Brass
(Shown in Two way 2-3mm)



Antique Bronze
(Shown in Two way 2-3mm)



Chrome
(Shown in Two way 4-5mm)



Satin Nickel
(Shown in Two way 6-7mm)

The Premier Two-Way Ramp is an ingenious product suitable for use on non porous floating floors and/or where underfloor heating is installed. Each ramp will accommodate two height differences by simply turning it around, so that gives four profiles covering height differences from 2mm to 9mm in 1mm increments. Ideal for laminates, engineered timber floors & LVT.

Choice of profiles: 2-3, 4-5, 6-7 & 8-9mm.

Choice of standard finishes: Antique Brass, Antique Bronze, Polished Brass, Satin Brass.

Choice of specialised finishes:

Brushed Chrome, Chrome, Pewter, Polished Nickel, Satin Nickel and Black.

Choice of length: 90cm (36"), 180cm (71") and 270cm (106").



Antique Brass
(Shown in Two way 2-3mm)



Satin Brass
(Shown in Two way 2-3mm)



Brushed Chrome
(Shown in Two way 4-5mm)



Polished Nickel
(Shown in Two way 6-7mm)



Pewter
(Shown in Two way 8/9mm)



Black
(Shown in Two way 8/9mm)



Ramps



Polished Brass
(Shown in Ramp 10mm)



Antique Bronze
(Shown in Ramp 14mm)



Chrome
(Shown in Ramp 20mm)



Satin Nickel
(Shown in 14mm)



Brushed Chrome
(Shown in Ramp 10mm)



Pewter
(Shown in Ramp 16mm)



Antique Brass
(Shown in Ramp 12mm)



Satin Brass
(Shown in Ramp 16mm)



Polished Nickel
(Shown in Ramp 12mm)



Black
(Shown in Ramp 20mm)

The Premier Ramp will give you a functional and attractive ramped transition between two hard floors that have a height difference of either 10, 12, 14, 16 or 20mm.

This profile can be used on both floating and fixed floors or where one surface is fixed and the other is floating. The Ramp is a stick down product therefore only suitable for non porous surfaces.

Choice of profiles: 10, 12, 14, 16 & 20mm.

Choice of standard finishes: Antique Brass, Antique Bronze, Polished Brass, Satin Brass.

Choice of specialised finishes:

Brushed Chrome, Chrome, Pewter, Polished Nickel, Satin Nickel and Black.

Choice of length: 90cm (36"), 180 (71") and 270cm (106").



Carpet Ramp



Polished Brass

The Premier Carpet Ramp. The first stick down ramp for carpet to hard flooring. It can be used on carpet up to a height of 36mm when used in conjunction with our Easyshims. Alternatively, the Carpet Ramp can be used for hard floor to higher carpet with no unsightly screws spoiling the surface finish.



Antique Brass



Antique Bronze

Profile size: 5mm.

Choice of standard finishes: Antique Brass, Antique Bronze, Polished Brass, Satin Brass.

Choice of specialised finishes:

Brushed Chrome, Chrome, Pewter, Polished Nickel, Satin Nickel and Black.

Choice of length: 90cm (36"), 180cm (71") and 270cm (106").



Satin Brass



Chrome



Brushed Chrome



Polished Nickel



Satin Nickel



Pewter



Black

Square & Bevel Caps



Polished Brass
(Shown in Square Cap)

The Premier Caps are perfect for that "minimalist" look. These can be used with Stick Down Carpets, LVT & various hard floor surfaces..

Choice of Bevel Cap Profiles: 2.5mm, 3mm, 4mm and 5mm.

Choice of Square Cap Profiles: 4mm and 5mm.

Choice of standard finishes: Antique Brass, Antique Bronze, Polished Brass, Satin Brass.

Choice of specialised finishes:

Brushed Chrome, Chrome, Pewter, Polished Nickel, Satin Nickel and Black.

Choice of length: 90cm (36"), 180cm (71") and 270cm (106").



Antique Brass
(Shown in Bevel Cap)



Antique Bronze
(Shown in Bevel Cap)



Satin Brass
(Shown in Square Cap)



Chrome
(Shown in Square Cap)



Brushed Chrome
(Shown in Bevel Cap)



Polished Nickel
(Shown in Square Cap)



Satin Nickel
(Shown in Bevel Cap)



Pewter
(Shown in Square Cap)



Black
(Shown in Bevel Cap)

Full Bull & No Bull LVT Nosings



Polished Brass
(Shown in No Bull)

Our Premier Nosings offer a high end solution for glue down & floating LVT and some thin carpets. Available for an overhang tread or a 90 degree tread/riser. Affectionately known as the Full Bull nosing and No Bull nosing.

Choice of profiles: No Bull and Full Bull.
Choice of slot Size: 2.5mm, 3mm, 4mm or 5mm.

Choice of standard finishes: Antique Brass, Antique Bronze, Polished Brass, Satin Brass.

Choice of specialised finishes: Brushed Chrome, Chrome, Pewter, Polished Nickel, Satin Nickel and Black.
Choice of length: 90cm (36"), 180cm (71") and 270cm (106").



Antique Brass
(Shown in Full Bull)



Antique Bronze
(Shown in No Bull)



Satin Brass
(Shown in Full Bull)



Chrome
(Shown in No Bull)



Brushed Chrome
(Shown in Full Bull)



Polished Nickel
(Shown in No Bull)



Satin Nickel
(Shown in Full Bull)



Pewter
(Shown in No Bull)



Black
(Shown in Full Bull)



Bendybull



Polished Brass

The Bendybull for straight or curved bullnose/curtail steps. For use with glue down & floating LVT, Rigid Core and some thin carpets.

Choice of Profile: 2.5mm, 3mm, 4mm or 5mm.

Choice of standard finishes: Antique Brass, Antique Bronze, Polished Brass, Satin Brass.

Choice of specialised finishes: Brushed Chrome, Chrome, Pewter, Polished Nickel, Satin Nickel and Black.
Choice of length: 90cm (36"), 180cm (71") and 270cm (106").



Antique Brass



Antique Bronze



Satin Brass



Chrome



Brushed Chrome



Polished Nickel



Satin Nickel



Pewter



Black



Lips



Polished Brass
(Shown in Lip)



Antique Bronze
(Shown in Bigger Lip)



Chrome
(Shown in Square Lip)



Satin Nickel
(Shown in Bigger Lip)

We have introduced a range of floor edgings to compliment our Premier Trim door bars. The Premier Lips are stick down profiles for hard non porous surfaces. They are available in 5 differently sized profiles. A different profile for every situation.

Choice of Profiles: Lip, Little Lip, Bigger Lip, Wide Lip and Square Lip.

Choice of standard finishes: Antique Brass, Antique Bronze, Polished Brass, Satin Brass.

Choice of specialised finishes:

Brushed Chrome, Chrome, Pewter, Polished Nickel, Satin Nickel and Black.

Choice of length: 90cm (36"), 180 (71") and 270cm (106").



Antique Brass
(Shown in Little lip)



Satin Brass
(Shown in Wide Lip)



Brushed Chrome
(Shown in Lip)



Polished Nickel
(Shown in Little Lip)



Pewter
(Shown in Wide Lip)



Black
(Shown in Square Lip)



Matwells



Polished Brass



Antique Bronze



Chrome



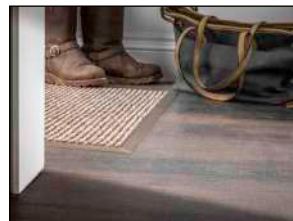
Satin Nickel
(Shown Floating)



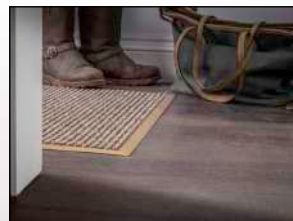
Brushed Chrome
(Shown Floating)



Pewter



Antique Brass
(Shown Floating)



Satin Brass
(Shown Floating)



Polished Nickel



Black
(Shown Floating)

Our Premier Matwell (Non Floating) is for flooring that has no expansion requirements. The Matwell simply sticks down on to the hard surface.

Our Premier Matwell (Floating) is for flooring that has expansion requirements.

Choice of Non Floating: 5mm & 8mm.

Choice of Floating: 12mm Small, 12mm Medium, 12mm Large, 17mm Small, 17mm Medium & 17mm Large.

Choice of standard finishes: Antique Brass, Antique Bronze, Polished Brass, Satin Brass.

Choice of specialised finishes:

Brushed Chrome, Chrome, Pewter, Polished Nickel, Satin Nickel and Black.

Choice of length: 90cm (36"), 180cm (71") and 270cm (106").

Ali Top Nose



Ali Brass

The Ali Top Nose is for use with 7mm and 8mm Laminate to a carpeted stair.

Choice of finishes:

Ali Brass, Ali Antique, Ali Chrome and Ali Black.

Choice of length:

90cm (36"), 180cm (71") and 270cm (106").



Ali Antique



Ali Chrome



Ali Black



Ali Wrap Nosings



Ali Brass



Ali Chrome

New Ali Wrap Nosing is available in 3 options.

Wrap Nosing for LVP/LVT 2.5mm and 3mm on 6mm plywood prep.

Wrap Nosing for 8mm and 6.5mm WPC (multi layered flooring) Flush and Overlap.

Choice of profiles: Ali Wrap Nosing LVT, Ali Wrap Nosing for WPC/SPC Flush and Ali Wrap Nosing for WPC/SPC Overlap

Choice of finishes:

Ali Brass, Ali Antique, Ali Chrome and Ali Black.

Choice of length:

90cm (36") and 180cm (71").



Ali Antique



Ali Black



Ali Tramline End Profile



Ali Brass

Our Ali Tramline End Profile is an alternative to scotia, base shoe, quarter round and uses a base material of aluminium for a high-quality installation.

Choice of Profiles: 1mm for WPC/SPC, 3mm for LVT 2-3mm and 5mm Floating LVT/Click/planned down Laminate.

Choice of finishes: Ali Brass, Ali Antique, Ali Chrome and Ali Black.

Length: 180cm (71")



Ali Chrome



Ali Antique



Ali Black



Ali Tramline Transition



Ali Brass

The Ali Tramline Transition is an alternative to 'T' mouldings and it uses a base material of aluminium for a high-quality installation.

Choice of Profiles: 1mm for WPC/SPC, 3mm for LVT 2-3mm and 5mm Floating LVT/Click/planned down Laminate.

Choice of finishes: Ali Brass, Ali Antique, Ali Chrome and Ali Black.

Length: 180cm (71")



Ali Chrome



Ali Antique



Ali Black



Ali TramlineZ



Ali Brass

The Ali TramlineZ is a perfectly matched joiner from carpet to hard flooring uses a base material of aluminium for a high-quality installation.

Choice of Profiles: 1mm for WPC/SPC and 3mm for LVT 2-3mm

Choice of finishes: Ali Brass, Ali Antique, Ali Chrome and Ali Black.

Length: 180cm (71")



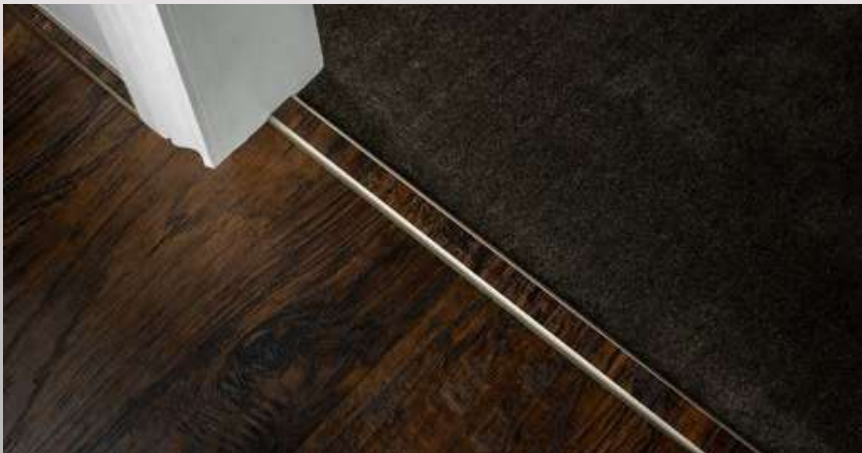
Ali Chrome



Ali Antique



Ali Black





Ali Brass

The Ali Bendybull for straight or curved bullnose/curtail steps.
For use with LVT 2.5mm and WPC/SPC or any multi layered flooring.
Can be used on all steps, or in conjunction with our Wrap Nosing which has an overlap option required for the top step needing expansion for WPC/SPC.



Ali Antique



Ali Chrome

Choice of finishes:

Ali Brass, Ali Antique, Ali Chrome and Ali Black.

Choice of length:

90cm (36"), 180cm (71") and 270cm (106").



Ali Black



Skiffers



Brass 75mm

Our Skiffer corner protectors are an ornate solid brass casting designed to prevent damage to skirting boards and wall corners. It is all too easy to scuff corners, for example when vacuum cleaning or moving furniture. Our corner protectors not only prevent this, but also add an attractive detail to a normally bland area of the house.



Antique Brass 75mm



Bronze 75mm

Skiffers are available in the following options.

Choice of finishes: Brass, Antique Brass, Satin Brass, Satin Nickel, Pewter, Black, Chrome, Bronze, Polished Nickel and Brushed Chrome.

Choice of height: 75mm, 107mm and 134mm.



Satin Brass 75mm



Chrome 107mm



Brushed Chrome 107mm



Polished Nickel 107mm



Satin Nickel 134mm



Pewter 134mm



Black 134mm



Decorative Pipe Covers



Brass
(Shown in Cordis)

The Decorative Radiator Pipe Covers use a base material of alloy metal for a high-quality installation.

Simply slots together and loose laid.
Fits a 15mm radiator pipe.

Choice of finishes: Brass, Antique Brass, Satin Brass, Satin Nickel, Pewter, Black, Chrome, Bronze, Polished Nickel and Brushed Chrome.

Choice of profiles: Cordis, Flos, Circulus, Solis, Oblongo, Stella and Quadratum.



Antique
(Shown in Flos)



Bronze
(Shown in Circulus)



Chrome
(Shown in Solis)



Pewter
(Shown in Oblongo)



Black
(Shown in Stella)



Satin Nickel
(Shown in Quadratum)

Easystuds



Brass

Carpet Studs make a feature of newel posts and landings, especially when used in conjunction with Easybind. These are a nice detail when used on half landings to continue the runner effect, something that can be very difficult for the carpet fitter using traditional methods.



Satin Nickel



Bronze

Choice of finishes: Brass, Bronze, Satin Nickel, Chrome and Pewter/Black finishes.



Chrome



Pewter/Black

Easybind

Beige, Black & Brown



Our Easybind carpet binding provides an alternative to whipping or binding and can save up to a week's delay in having your new carpet fitted. It enables carpet fitters to bind a carpet runner or rug on site, with 38 colours to choose from.

Easybind carpet binding come in the following colour groups:

Blues, Greys and Greens

Beige, Black and Brown

Multi Colour

Pinks and Red

Specialised Colours

Multi Colour



Blue, Green & Grey



Pink & Red



Specialised



Brochure Edition: December 2019

Stairrods (UK) Ltd

Unit 6, Park Road North Ind Est,
Blackhill, Consett,
Co Durham, DH8 5UN
T: +44 (0) 1207 591176
F: +44 (0) 1207 591911
E: sales@stairrods.co.uk
www.stairrods.co.uk

Stairrods Australia

www.stairrods.com.au

Stairrods USA/Canada

www.stairrods.us