

ETON BASIC

10 Year Limited Wear Warranty

Soil and Stain Resistant

Castor Chair Warranted

Innovative Colours

Heavy Contract



Durable. Comfort. Performance

danfloor
An Ulster Group Company

ETON BASIC

A range of carpets for the commercial, education and retail sectors

Manufactured from the regenerated ECONYL® nylon yarn ETON Basic offers heavy wear characteristics, proven performance, anti-static properties and durability. Available in a range of contemporary colours and two backing types, ETON Basic provides extra comfort, thermal insulation and sound absorption making the range ideal for the commercial, education and retail sectors.



ECONYL®
ENDLESS POSSIBILITIES

It's all about the fibre

The ECONYL® nylon yarn is an important factor contributing to the integrity and resilience of this carpet range and goes a long way in determining it's overall performance. Made with regenerated nylon fibres, including pre and post-industrial and consumer waste makes the ECONYL® yarn 100% regenerated and infinitely regenerable.

Intelligent Sustainability

The ECONYL® Regenerated system is an intelligent and sustainable way to create products from waste and maintain a continuous loop. The Nylon yarn produced through this process provides the same high quality and technical performance as those yarns made from virgin raw materials, the big difference is that it is much more sustainable.

Wear Resistance and Appearance Retention

Nylon is known for its durability as it's the hardest of all synthetic carpet fibres, resisting wear and abrasion. The fibre has excellent resilience as it bounces back after being bent or crushed and fantastic yarn "memory" meaning that it holds its twist well and is less likely to show indentations after any furniture has rested on it.

Low Soiling

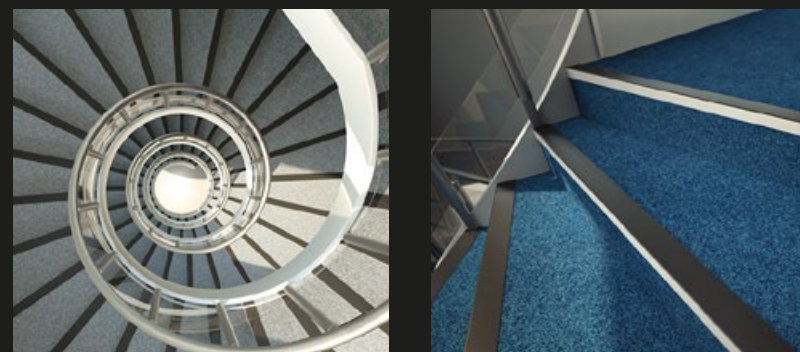
Due to the shape of the yarn filament Nylon carpets minimise soil accumulation making them easy to clean and help to hide the visual effects of soiling well.

Heat resistance

The class of reaction to fire performance Bfl and Cfl according to EN 13501-1 are the highest possible categories for textile floor coverings. These classifications are achieved easily with The ECONYL® nylon yarn.

Antistatic

The ECONYL® carpet yarn contains fine, conductive fibres that protect against electrostatic charges throughout the life of the carpet.



ETON BASIC



3175 076

ETON BASIC



3175 020



3175 022

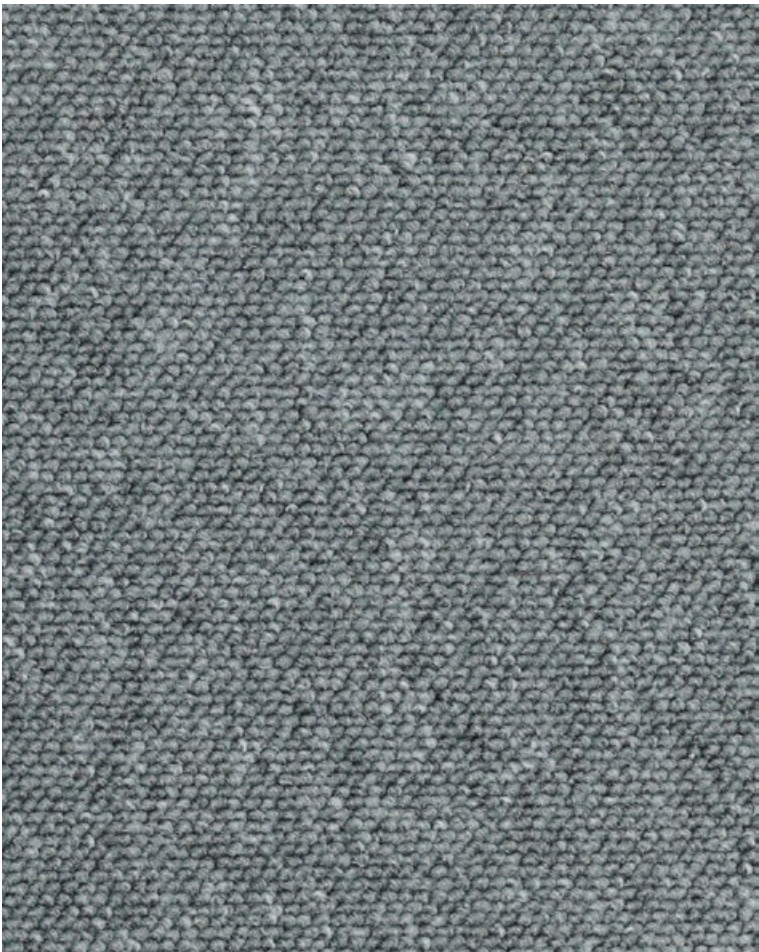


3175 030

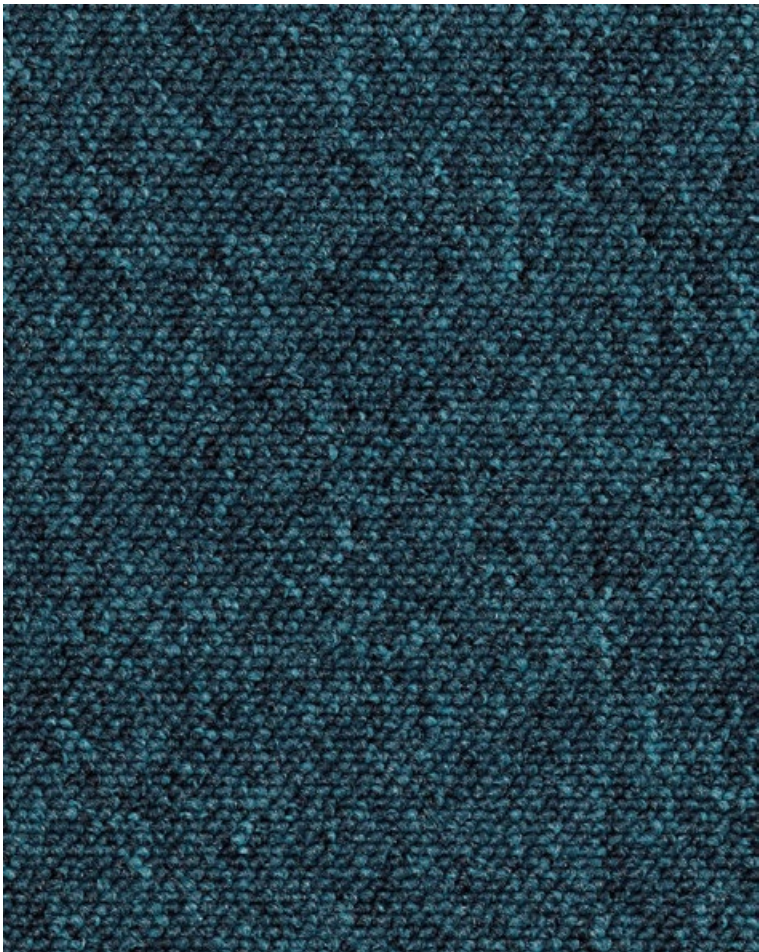


3175 078

ETON BASIC



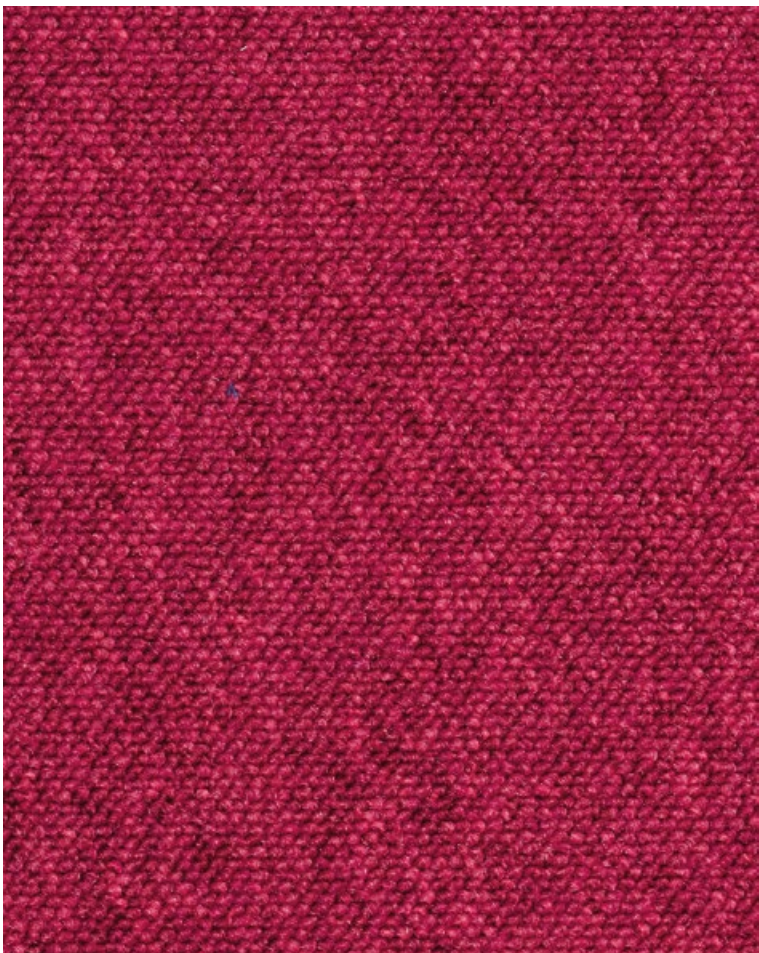
3175 072



3175 067



3175 086



3175 091

TECHNICAL SPECIFICATION	ETON BASIC	STANDARD
Design Pattern Identification	3175	
Method of Manufacture	Tufted Loop Pile	DIN ISO 2424
Gauge	5/32" Gauge	DIN ISO 2424
Measures	Rolls, approx. 400cm wide	DIN 3018
Surface	Loop Pile	DIN ISO 2424
Colouration	Multi coloured	DIN ISO 2424
Pile Material	ECONYL® 100% Regenerated Nylon	DIN ISO 2424
Primary Backing	Synthetic	DIN ISO 2424
Backing	Latex KT / Textile TD Bac	DIN ISO 2424
Total Weight	KT Bac approx 2500 g/m² TD Bac approx 2200 g/m²	ISO 8543
Pile Weight	approx. 620 g/m²	DIN ISO 2424
Total Height	approx. KT Bac 6.00 mm / TD Bac 5.00mm	ISO 8543
Pile Height	approx. 4.00 mm	ISO 1766
Number of Tufts	approx. 100,000 Mt Sq	ISO 1763
Warranty	10 Years	
FUNCTIONAL PROPERTIES		
Wear Classification	33 Commercial Use Normal	EN 1307
PHYSICAL PROPERTIES		
Surface Resistance	approx. ≤10/9 Ohm	ISO 10965
Earthing properties	approx. ≤10/9 Ohm	DIN IEC 1340-4-1
Electrostatic Properties	<2kv	ISO 6356
Sound Impact	approx. 25dB	ISO 140-8
Thermal Resistance	approx KT Bac 0.12/ TD Bac 0.10	
Burning Classification	Cfl-s1	DIN EN 13501-1
Light Fastness	Min 5	ISO 105-B02
Water Fastness	Min 4	EN ISO 105 E01

Colour Selection

Although the ETON Basic range is designed to minimise visual soiling, it is strongly recommended that care be taken in choosing colours to suit particular locations. Medium to dark coloured carpets disguise soiling more effectively than plain, light shades and should therefore be considered for high traffic areas such as corridors.

Tolerances

Product specifications are derived from averages in yarn, fibre, temperature and colour which may vary within the standard industry tolerances. Performance is not affected by such variations.

Care & Maintenance

Carpet should be cleaned daily with a vacuum cleaner, preferably one with a beater action. Spillages should be taken up promptly and surface stains removed by an appropriate method as soon as possible. Instructions for the maintenance of carpets are available from danfloor upon request or can be downloaded from www.danfloor.co.uk. It is recommended that a maintenance schedule be initiated from the date of installation to achieve maximum life expectancy of the product. Chair pads are required under roller castor chairs to prevent accelerated wear and to preserve appearance retention. Please note that loop pile carpets may be damaged if not adequately protected from sharp objects.

Installation

Prior to cutting and installation all carpets should be unrolled and inspected to ensure all quality standards have been met. Approval should be sought with the client as to the location of all joins. Installation must be carried out by an approved carpet installer in accordance to BS5325:2001. A full Installation Guide, including recommended adhesives, can be downloaded from www.danfloor.co.uk



ECONYL®
ENDLESS POSSIBILITIES

danfloor
An Ulster Group Company

Innovative Carpet Solutions

danfloor Uk Ltd
106 Longmead Road, Emerald Park, Emersons Green
Bristol BS16 7FG, United Kingdom
T: 0333 014 3132, F: 0333 014 3134
E: info@danfloor.co.uk

Danfloor Denmark
danfloor a/s, Østerbro 9, DK-6933 Kibæk
T: +45 9699 1900, F: +45 9699 1999

www.danfloor.co.uk