



CONNOR® SPORTS

HARDWOOD SYSTEMS

FOCUS™ **FIXED RESILIENT SYSTEM**

CERTIFIED
BY THESE
LEADERS
IN SPORT



connorsports.com/hardwood

FOCUS™

FIXED RESILIENT SYSTEM

Connor Sports • 800.283.9522 • 847.290.9020 • info@connorsports.com • connorsports.com/hardwood



Focus pre-assembled subfloor panels include elongated elastic pads providing resilient ribbons extending from wall to wall at nominally 8" on center.

Patented subfloor panels create a method for floor system reaction to light loads such as isolated player impacts and additional desired pad support and reaction to heavier loads such as multiple player impacts.

FOCUS FIXED RESILIENT SYSTEM

ANCHORAGE

- 1-Integrated Anchorage Clip
- 2-Anchorage Pin with Anti-Squeak Collar
- 3-Sectional Channel with Concrete Anchor Pocket

RESILIENCE

Recycled Continuous Lineal Cushion



STAGE ONE

Reacting to light athletic loads, individual players, young participants.



STAGE TWO

Reacting to heavy athletic loads and multiple participants.



STAGE THREE

Reacting with protective cushion housing and floor system support.

Slab Depression: 25/32" (20 mm) flooring – 1-3/4" (44 mm) • 33/32" (26 mm) flooring – 2" (51 mm)



Performance Status:
Meets or exceeds all the requirements of DIN 18032, part 2, 2001

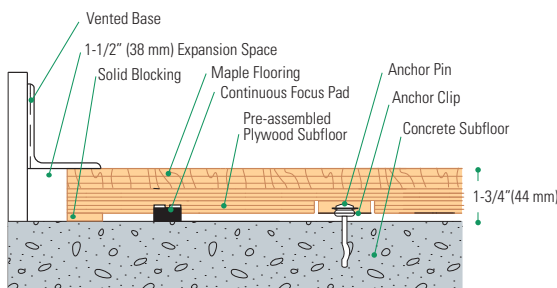
FLOORING

MFMA Northern Hard Maple

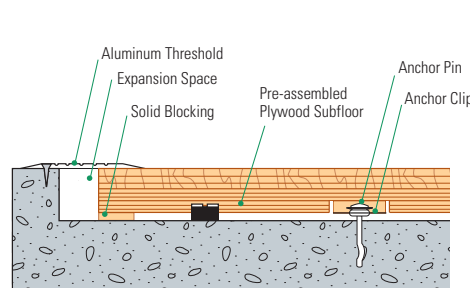
SUBFLOOR CONSTRUCTION

9001:2008 Manufactured
ISO Pre-Assembled Plywood Panels

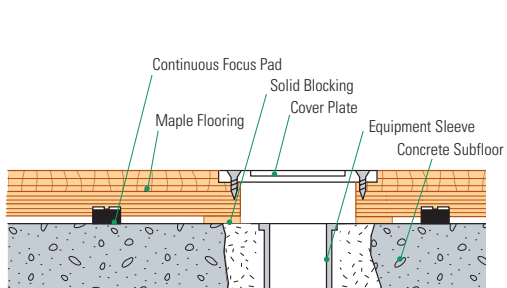
Wall Base Detail



Threshold Detail (Optional Accessory)



Equipment Detail (Optional Accessory)



Manufacturing:
ISO 9001:2008
CERTIFIED
ISO 14001:2004
CERTIFIED



Recycled Contribution:
Focus Subfloor System includes components with recycled content



Testing Laboratory:
United States Sports Surfacing Laboratory



Certified Testing:
ISSS Scientific Body Membership



Green Status
Managed Forests, Certification Available



Environmental Product Declaration
The first sports floor manufacturer to publish UL certified product-specific environmental performance in compliance with LEED V.4