



GRANGE

WILTON

GRANGE

WILTON

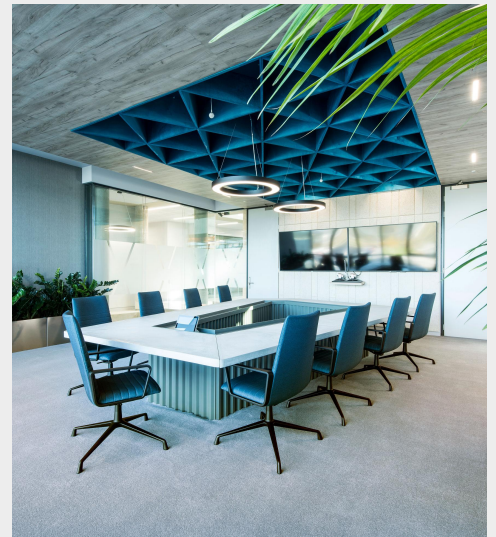
Grange Wilton is a luxurious woven twist range, made in the UK, comprising of 40 colours that is suitable for both Residential and Contract settings.

Combining the luxury of wool and the hardwearing properties of nylon, Grange Wilton is a blend of 80% wool, 20% nylon plain and heather yarns, woven tightly to create the ultimate in floor covering.

Colourways within Grange Wilton include warm organic mineral tones, soft muted greys through to slate, beiges, green and reds all inspired by a timeless 'heritage' palette.

Ulster's unique Multi Width service means Grange Wilton is available in 5m, 4m, 3m, 2m and 1m colour matching widths. This unique service reduces wastage to provide a more cost-effective solution to customers.

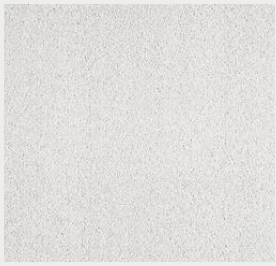
The nostalgic tones and colours found in Grange Wilton will effortlessly help create warmth and practical luxury in any interior scheme. Alternatively each of the 40 colours can be combined with other Ulster products to achieve a flowing scheme.



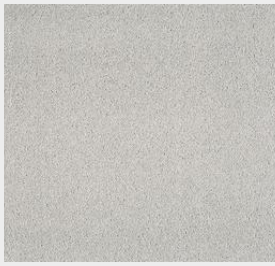








Seasalt
G1026



Priory
G1027



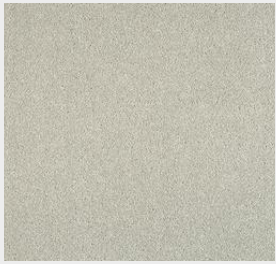
Whisper
G1018



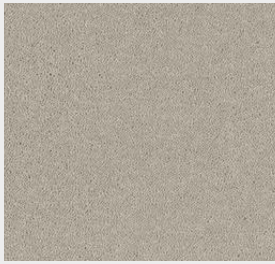
Mistral
G1039



Fleet
G1040



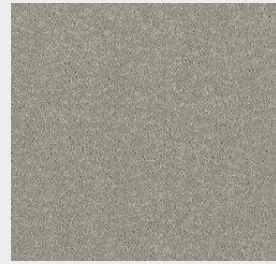
Cygnet
G1030



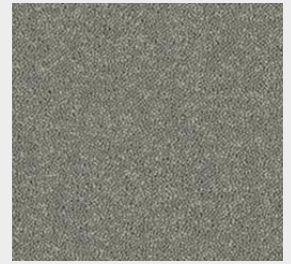
Mist
G1021



Celadon
G1037



French Grey
G1022



Greyhound
G1019



Gorge
G1034



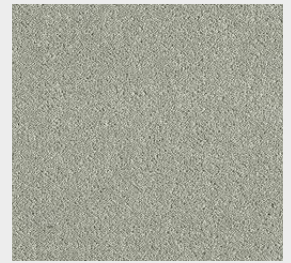
Sawgrass
G1033



Dolomite
G1032



Cavern
G1031



Samphire
G1038



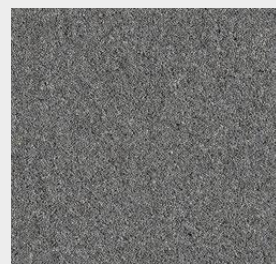
Silversmith
G1025



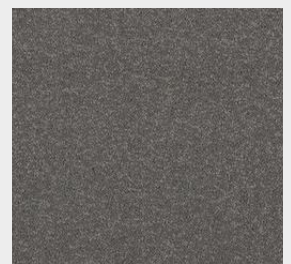
Woolsack
G1015



Woad
G1035



Hudson
G1036



Lowry
G1016

Products should be selected from actual samples.



Millstone
G1029



Woburn
G1028



Beeswax
G1009



Pantry
G1011



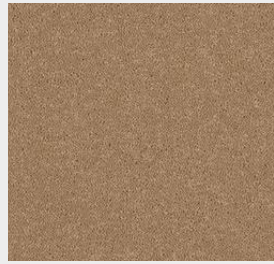
Angora
G1001



Spelt
G1007



Tallow
G1012



Giltwood
G1017



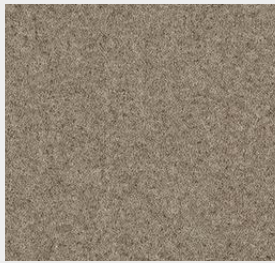
Wattle
G1002



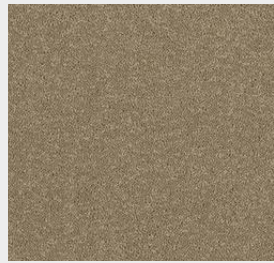
Appleby
G1014



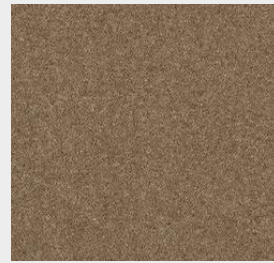
Flagstone
G1004



Partridge
G1005



Romney
G1013



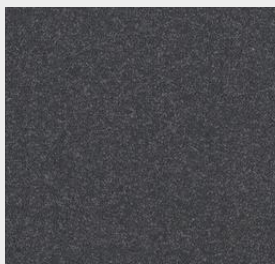
Cair
G1003



Otter
G1006



Moorland
G1008



Brunel
G1020



Kew
G1024

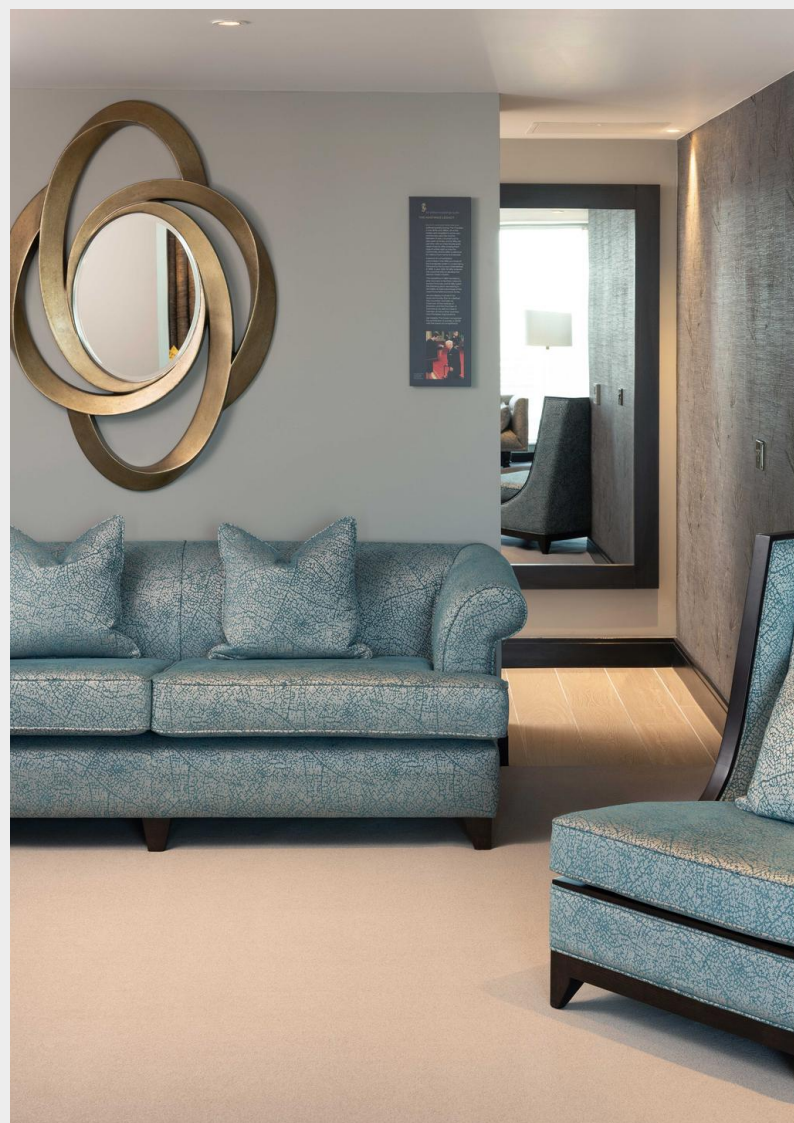


Grenadier Red
G1010



Red Setter
G1023

Products should be selected from actual samples.



TECHNICAL INFORMATION

RESIDENTIAL

Widths Available (m)

5, 4, 3, 2, 1

Suitability

Extra heavy wear

Tog Rating

1.5

SAMPLES

You can order samples to be delivered direct to your door free of charge via our website.

Alternatively check our website to find contact details for your nearest retailer.

KEY SELLING POINTS



Wool

Natural & durable
Fire safe
Easy to clean
Non allergenic



Service

Award winning service
10-15 day delivery
95%+ stock availability
48hr sample service



Quality

Superior construction
Moth resistant
Premium materials



Product

Optimum performance
Greater stability
Unrivalled choice



Better value



Less Waste



Colour matching



Wider widths

TECHNICAL INFORMATION CONTRACT

Widths: 5, 4, 3, 2, 1
(16'5"), (13'1"), (9'10"), (6'6"), (3'3")

Quality: 10.2 Row

Pile Yarn: 80% Wool (mothproofed) / 20% Nylon

Construction: Woven Wilton (Twist)

Backing Coating: SB Latex

Backing Materials: Weft - Jute
Warp - Jute and Cotton

Total Pile Weight: 1774g/m² (52.3 oz/yd²) +/-10%

Pile Height: 9.35mm / 0.368 inch +/-10%

Suitability: Public Areas, Meeting Rooms, Guestrooms &
Suites / General Domestic

CFL fire testing: BS EN11925, EN ISO 9239, Class Cfl S1.





ulsterTM
www.ulstercarpets.com

Rez-de-chaussée, 59 rue du Faubourg Saint-Antoine, 75011 Paris
Tel: +33 (1) 70 22 48 04 E: uceurope@ulstercarpets.com