



BY APPOINTMENT TO  
HIS MAJESTY THE KING  
CARPET MANUFACTURER  
ULSTER CARPET MILLS (HOLDINGS) LTD  
COUNTY ARMAGH

# ulster™



# GRANGE

WILTON

# GRANGE

## WILTON

Grange Wilton is a luxurious woven wilton twist range, made in the UK, comprising 40 colours that is suitable for public areas, meeting rooms, bedrooms and suites.

Combining the luxury of wool and the hardwearing properties of nylon, Grange Wilton is a blend of 80% wool, 20% nylon plain and heather yarns, woven tightly to create the ultimate in floor covering.

Colourways within Grange Wilton include warm organic mineral tones, soft muted greys through to slate, beiges, green and reds all inspired by a timeless 'heritage' palette.

Ulster's unique Multi Width service means Grange Wilton is available in 5, 4, 3, 2 and 1m colour matching widths. This unique service reduces wastage to provide a more cost-effective solution to customers.

The nostalgic tones and colours found in Grange Wilton will effortlessly help create warmth and practical luxury in any interior scheme. Alternatively each of the 40 colours can be combined with other Ulster products to achieve a flowing scheme.



Grange Wilton Greyhound G1019 | Grand Central Hotel, Belfast |  
The Sir William Hastings Suite

Grange Wilton Woburn G1028 | Grand Central Hotel, Belfast | The Sir William Hastings Suite



Grange Wilton Wood G1035 | CDE Global, Cookstown | Boardroom Office & Meeting Room





Grange Wilton Woad G1035 | CDE Global, Cookstown | Meeting Room



Seasalt  
G1026



Priory  
G1027



Whisper  
G1018



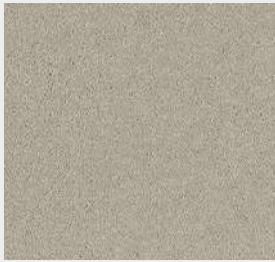
Mistral  
G1039



Fleet  
G1040



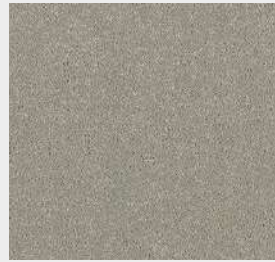
Cygnet  
G1030



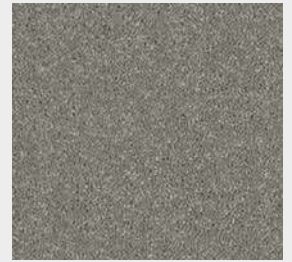
Mist  
G1021



Celadon  
G1037



French Grey  
G1022



Greyhound  
G1019



Gorge  
G1034



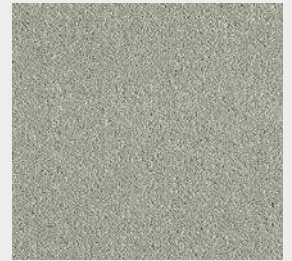
Sawgrass  
G1033



Dolomite  
G1032



Cavern  
G1031



Samphire  
G1038



Silversmith  
G1025



Woolsack  
G1015



Woad  
G1035



Hudson  
G1036



Lowry  
G1016

Products should be selected from actual samples.



Millstone  
G1029



Woburn  
G1028



Beeswax  
G1009



Pantry  
G1011



Angora  
G1001



Spelt  
G1007



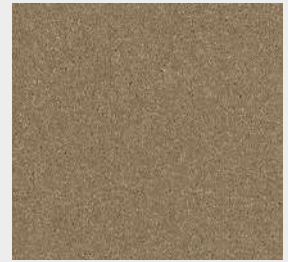
Tallow  
G1012



Giltwood  
G1017



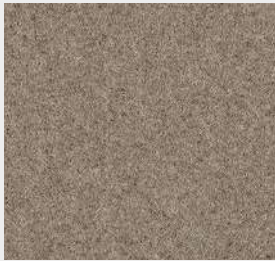
Wattle  
G1002



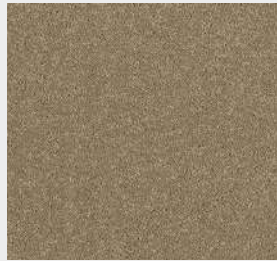
Appleby  
G1014



Flagstone  
G1004



Partridge  
G1005



Romney  
G1013



Coir  
G1003



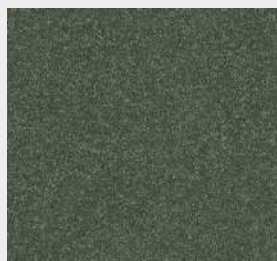
Otter  
G1006



Moorland  
G1008



Brunel  
G1020



Kew  
G1024



Grenadier Red  
G1010

Products should be selected from actual samples.

# TECHNICAL SPECS

<b>Widths:</b>	<b>5, 4, 3, 2, 1 (16'5"), (13'1"), (9'10"), (6'6"), (3'3")</b>
<b>Quality:</b>	<b>10.2 Row</b>
<b>Pile Yarn:</b>	<b>80% Wool (mothproofed) / 20% Nylon</b>
<b>Construction:</b>	<b>Woven Wilton (Twist)</b>
<b>Backing Coating:</b>	<b>SB Latex</b>
<b>Backing Materials:</b>	<b>Weft - Jute Warp - Jute and Cotton</b>
<b>Total Pile Weight:</b>	<b>1774g/m<sup>2</sup> (52.3 oz/yd<sup>2</sup>) +/-10%</b>
<b>Pile Height:</b>	<b>9.35mm / 0.368 inch +/-10%</b>
<b>Suitability:</b>	<b>Public Areas, Meeting Rooms, Guestrooms &amp; Suites / General Domestic</b>
<b>CFL fire testing:</b>	<b>BS EN11925, EN ISO 9239, Class Cfl S1.</b>

# MAKING A DIFFERENCE

It is the company's policy to provide a sustainable business for future generations. As industry pioneers we continually review our processes to find more efficient and sustainable ways to manufacture luxury carpet.

Did you know wool fleece is re-grown in 12 months providing a sustainable supply of high quality raw material? Due to its natural properties, wool is a luxurious and extremely versatile rapidly renewable material. Naturally stain repellent and easy to maintain, a wool rich carpet looks good for longer, making it both a durable and sustainable choice.

The natural characteristics of wool and the inherent qualities of axminster & wilton weaving make the perfect combination, providing a clear alternative to man-made substitutes.

[Take a look at the other ways we are looking after our planet.](#)



ulster™  
www.ulstercarpets.com

Unit 1 Compton Courtyard, 40 Compton Street, London, EC1V 0BD  
T: 020 7017 0040 | E: uclondon@ulstercarpets.com