



BY APPOINTMENT TO
HIS MAJESTY THE KING
CARPET MANUFACTURER
ULSTER CARPET MILLS (HOLDINGS) LTD
COUNTY ARMAGH

ulster™



ØPEN
SPACES



CONTENTS

OPEN SPACES

Dubai [4](#)

OPEN SPACES LANEVE™

Auckland [8](#)

Napier [10](#)

Queenstown [12](#)

Raglan [14](#)

Technical Specification [18](#)



Dubai

100% Wool

Suitability: Moderate Contract

Available in 5m, 4m, 3m, 2m, 1m widths

10/1319 Snowdrop



15/1319 Lemongrass



31/1319 Pearl



61/1319 Limewash



20/1319 Blonde



43/1319 Demerara



30/1319 Malt



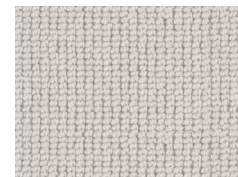
71/1319 Dapple



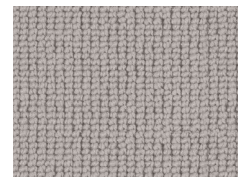
12/1319 Polar



72/1319 Alpine



74/1319 Tor



35/1319 Glaze



76/1319 Echo





What is Open Spaces Laneve™?

Ulster Carpets, working in partnership with Wools of New Zealand, have developed five 100% New Zealand wool tufted (loop pile), Laneve™ ranges - Auckland, Napier, Queenstown, Raglan and Wellington Stripe.

Manufactured in Denmark by Danfloor - an Ulster Group Company specialising in the manufacture of tufted products - the Open Spaces Laneve™ range utilises a dense loop pile texture to create a contemporary floor covering that is also soft and warm.

Why Choose Laneve™?

In choosing any of these Wools of New Zealand Laneve™ products, the consumer is purchasing a luxurious 100% wool carpet, supplied by farmers who must meet a comprehensive range of environmental, social responsibility and animal welfare standards.

Design: ØPEN SPACES Auckland Concrete



Auckland

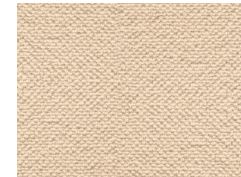
100% New Zealand Wool

Suitability: Moderate Contract

Available in 5m, 4m, 3m, 2m, 1m widths



10/1428 Calico



62/1428 Hammock



71/1428 Coast



25/1428 Driftwood



28/1428 Mortar



74/1428 Anvil



70/1428 Grayling



72/1428 Sidewalk



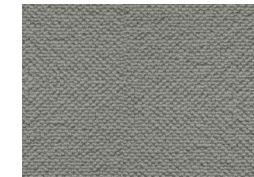
11/1428 Ermine



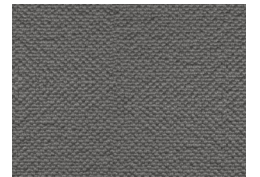
73/1428 Glint



75/1428 Concrete



76/1428 Paraffin



Design: ØPEN SPACES Napier Mata



Napier

100% New Zealand Wool

Suitability: Moderate Contract

Available in 5m, 4m, 3m, 2m, 1m widths



76/1455 Basalt



30/1455 Burlap



72/1455 Cape



70/1455 Crest



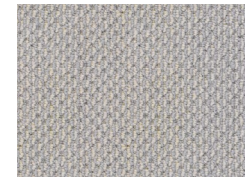
20/1455 Mata



64/1455 Riptide



12/1455 Silica



74/1455 Marl





Queenstown

100% New Zealand Wool

Suitability: Moderate Contract

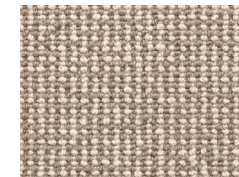
Available in 5m, 4m, 3m, 2m, 1m widths



20/1431 Crystal Beige



25/1431 Bunting



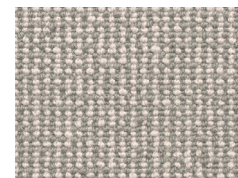
63/1431 Quill



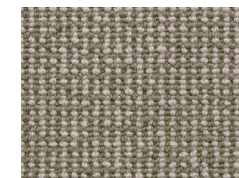
64/1431 Jute



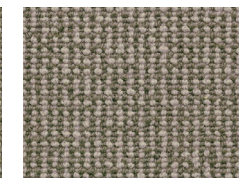
70/1431 Swedish Grey



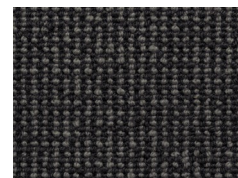
66/1431 Awning



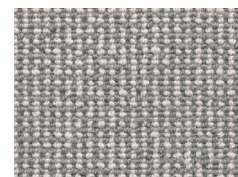
68/1431 Nova



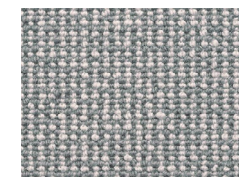
75/1431 Furnace Black



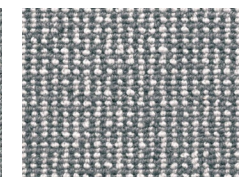
80/1431 Delft



60/1431 Baltic



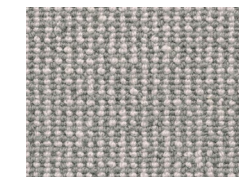
76/1431 Cadet



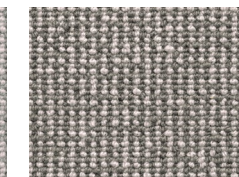
77/1431 Ink



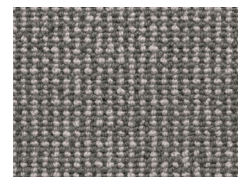
71/1431 Gull



72/1431 Urban



73/1431 Whale





Raglan

100% New Zealand Wool

Suitability: Moderate Contract

Available in 5m, 4m, 3m, 2m, 1m widths



72/1450 Cape



74/1450 Marl



Technical Specification

Widths:	5m, 4m, 3m, 2m & 1m (16'4", 13'1", 9'10", 6'6" & 3'3")
Pile Yarn:	Auckland, Napier, Queenstown, Raglan 100% New Zealand Wool (Laneve™) (Moth Resistant)
	Dubai 100% British / New Zealand Wool (Moth Resistant)
Total Pile Weight:	Auckland, Napier, Queenstown, Raglan 1200g/m ² (35 oz/yd ²) +/-5%
	Dubai 1500g/m ² (44.24 oz/yd ²) +/-5%
Pile Height:	Auckland, Napier, Queenstown, Raglan 5mm (0.20")
	Dubai 6mm (0.24")
Suitability:	Moderate Contract / Heavy Domestic

Largeurs:	5m, 4m, 3m, 2m & 1m
Composition du fil:	Auckland, Napier, Queenstown, Raglan 100% Laine de Nouvelle-Zélande (Laneve™) (résistant aux mites)
	Dubai 100% Laine britannique et de Nouvelle Zélande (résistant aux mites)
Poids total de velours:	Auckland, Napier, Queenstown, Raglan 1200g/m ² +/-5%
	Dubai 1500g/m ² +/-5%
Hauteur de velours:	Auckland, Napier, Queenstown, Raglan 5mm
	Dubai 6mm
Qualité:	Usage commercial modéré / Usage domestique intensif

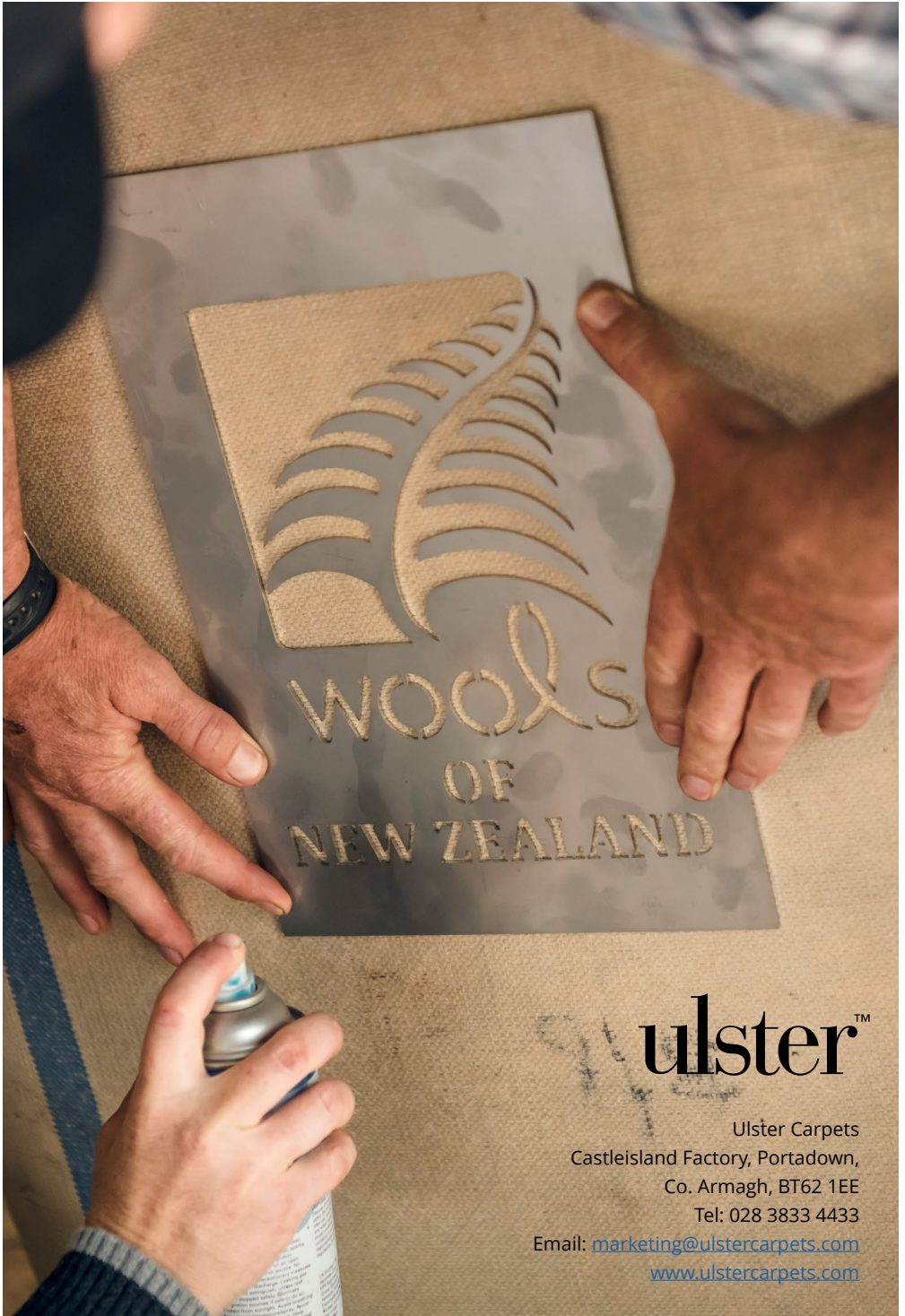
Breiten:	5m, 4m, 3m, 2m & 1m (16'4", 13'1", 9'10", 6'6" & 3'3")
Polzusammensetzung:	Auckland, Napier, Queenstown, Raglan 100% Neuseeland Schurwolle (Laneve™) (mottenresistent)
	Dubai 100% Britische / Neuseeland Schurwolle (mottenresistent)
Poleinsatzgewicht:	Auckland, Napier, Queenstown, Raglan 1200g/m ² +/-5%
	Dubai 1500g/m ² +/-5%
Polhöhe:	Auckland, Napier, Queenstown, Raglan 5mm
	Dubai 6mm
Qualität:	Leichte Anwendung im Objektbereich / Starke Anwendung im Privatbereich

Please note:
Carpet should be professionally laid according to BS 5325
ISO13746:2000 using good quality underlay.

A noter:
Toute moquette doit être posée selon la norme BS 5325 ISO
13746:2000 en utilisant une thibaude de bonne qualité.

Bemerkung:
Teppichboden sollte gemäß BS 5325 ISO 13746:2000 mit einer
qualitativ hochwertigen Teppich-Unterlage verlegt werden.





ulster[™]

Ulster Carpets
Castleisland Factory, Portadown,
Co. Armagh, BT62 1EE
Tel: 028 3833 4433

Email: marketing@ulstercarpets.com
www.ulstercarpets.com