



CONNOR[®] SPORTS

HARDWOOD SYSTEMS

REZILLCHANNEL-01™

FIXED RESILIENT SYSTEM



CERTIFIED
BY THESE
LEADERS
IN SPORT



connorsports.com/hardwood

REZILLCHANNEL-01™

FIXED RESILIENT SYSTEM

Connor Sports • 800.283.9522 • 847.290.9020 • info@connorsports.com • connorsports.com/hardwood



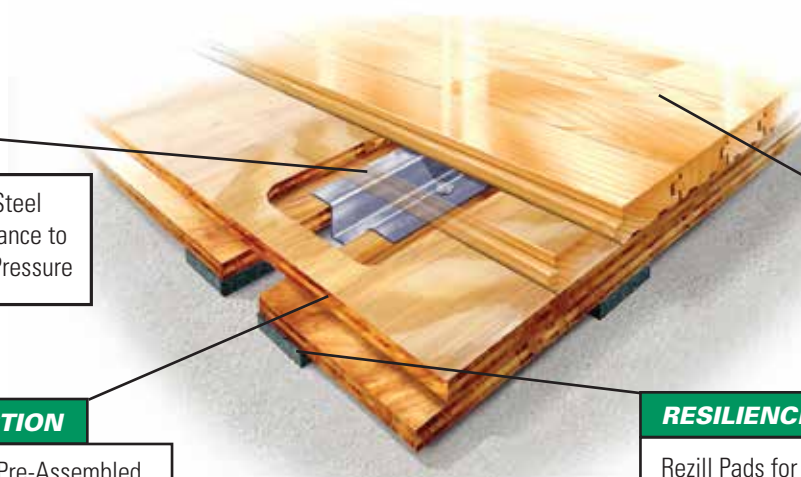
RezillChannel-01 incorporates resilient Rezill pads at a rate of two pads per square foot supporting pre-manufactured double layer plywood subfloor panels.

Subfloor anchor pockets include placement of substrate anchor channels, which allow for lateral movement of subfloor panels when influenced by seasonal flooring shrinkage and expansion.

REZILLCHANNEL-01 FIXED RESILIENT SYSTEM



Performance Status:
Meets or exceeds all the requirements of DIN 18032, part 2



ANCHORAGE

Heavy-duty, Buckle Resistant Steel Channel Provides Great Resistance to Pin Pull Through and Upward Pressure

FLOORING

MFMA Northern Hard Maple

SUBFLOOR CONSTRUCTION

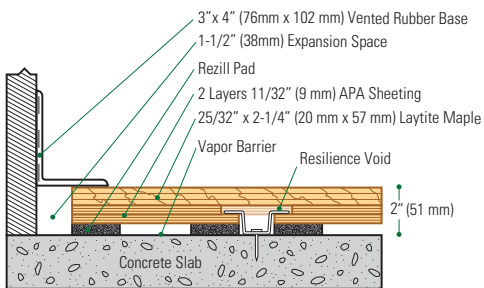
ISO 9001:2008 Manufactured Pre-Assembled Plywood Panels.

RESILIENCE

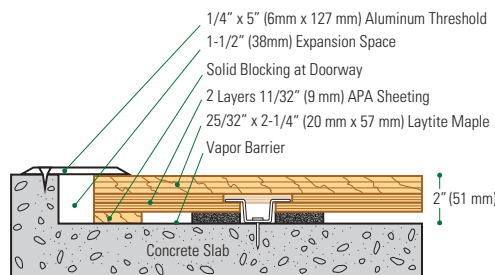
Rezill Pads for Excellent Resilient Life and Loading

Slab Depression: 25/32" (20 mm) flooring - 2" (51 mm) • 33/32" (26 mm) flooring - 2 1/4" (57 mm)

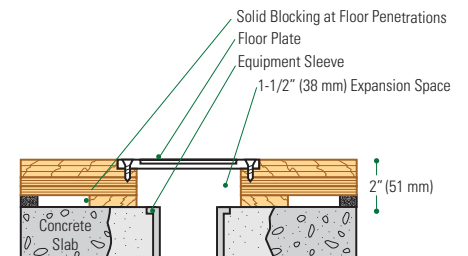
Wall Base Detail



Threshold Detail (Optional Accessory)



Equipment Detail (Optional Accessory)



Manufacturing:
 ISO 9001:2008
 CERTIFIED
 ISO 14001:2004
 CERTIFIED



Recycled Contribution:
 RezillChannel-01 Subfloor System Includes Components with Recycled Content



Testing Laboratory:
 United States Sports Surfacing Laboratory



Certified Testing:
 ISSS Scientific Body Membership



Green Status
 Managed Forests, Certification Available



Environmental Product Declaration
 The First Sports Floor Manufacturer to Publish UL Certified Product-Specific Environmental Performance In Compliance with LEED V.4