



CONNOR® SPORTS

HARDWOOD SYSTEMS

S-CHANNEL™

FIXED RESILIENT SYSTEM

CERTIFIED
BY THESE
LEADERS
IN SPORT



connorsports.com/hardwood

S-CHANNEL™

FIXED RESILIENT SYSTEM

Connor Sports • 800.283.9522 • 847.290.9020 • info@connorsports.com • connorsports.com/hardwood



S-Channel incorporates full blanket pad resiliency supporting pre-manufactured double layer subfloor panels. Subfloor anchor pockets include placement of substrate anchor channels, which allow for lateral movement of subfloor panels when influenced by seasonal flooring shrinkage and expansion.

S-CHANNEL FIXED RESILIENT SYSTEM



Performance Status:
Meets or exceeds
all the requirements
of DIN 18032, part 2

ANCHORAGE

Heavy-duty, Buckle Resistant Steel Channel provides Great Resistance to Pin Pull Through and Upward Pressure

FLOORING

MFMA Northern
Hard Maple

RESILIENCE

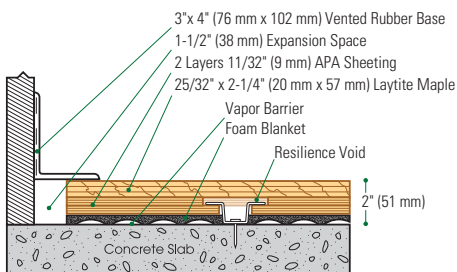
Rebonded Open Cell Flexible Polyurethane Foam Blanket

SUBFLOOR CONSTRUCTION

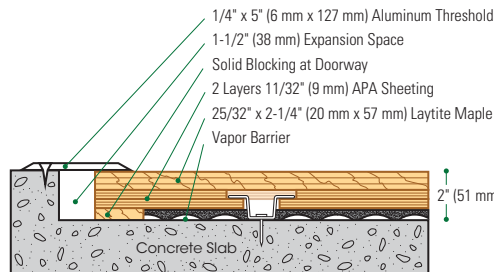
ISO 9001:2008 Manufactured Pre-Assembled Plywood Panels

Slab Depression: 25/32" (20 mm) flooring - 2" (51 mm) • 33/32" (26 mm) flooring - 2 1/4" (57 mm)

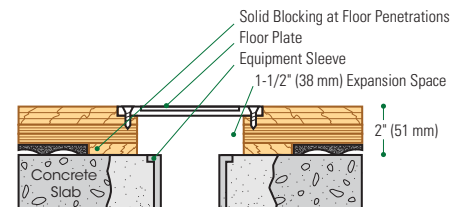
Wall Base Detail



Threshold Detail (Optional Accessory)



Equipment Detail (Optional Accessory)



Manufacturing:
ISO 9001:2008
CERTIFIED
ISO 14001:2004
CERTIFIED



Recycled Contribution:
S-Channel Subfloor System
includes components with
recycled content



Testing Laboratory:
United States Sports
Surfacing Laboratory



Certified Testing:
ISSS Scientific
Body Membership



Green Status
Managed Forests,
Certification Available



Environmental Product Declaration
The First Sports Floor Manufacturer to Publish
UL Certified Product-Specific Environmental
Performance In Compliance with LEED V.4