

A long, narrow wooden pier extends from the foreground into a calm body of water. The pier is supported by numerous vertical wooden posts. The water is still, reflecting the overcast sky. The sky is filled with soft, grey clouds, creating a moody atmosphere. The overall scene is serene and minimalist.

ulster™

www.ulstercarpets.com

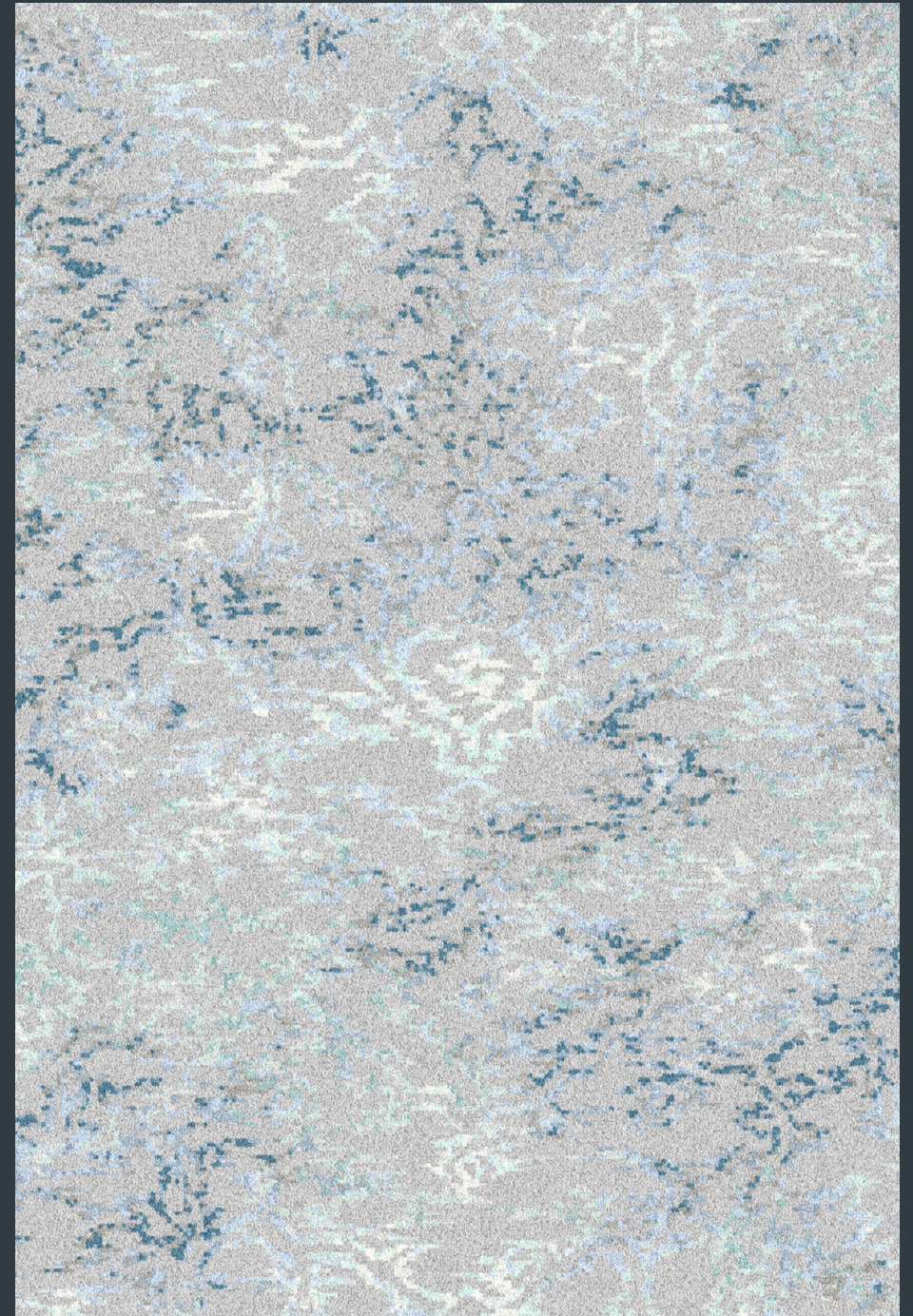
WATERCOLOURS

AMULET

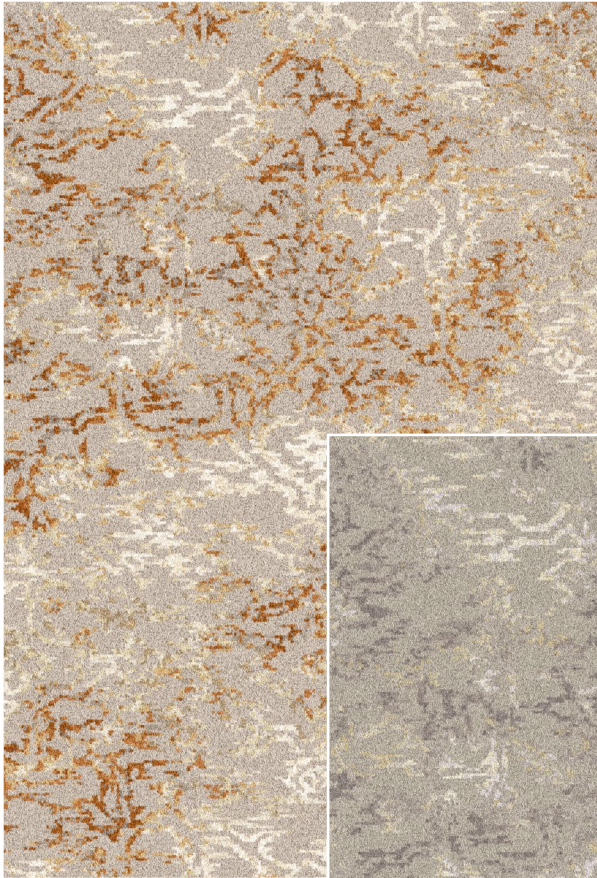
"These effortless textures are layered over classic designs to give an antiqued effect - that of a textile treasured over time so only fragments of the pattern remain."



12/20091 Amulet Brimstone



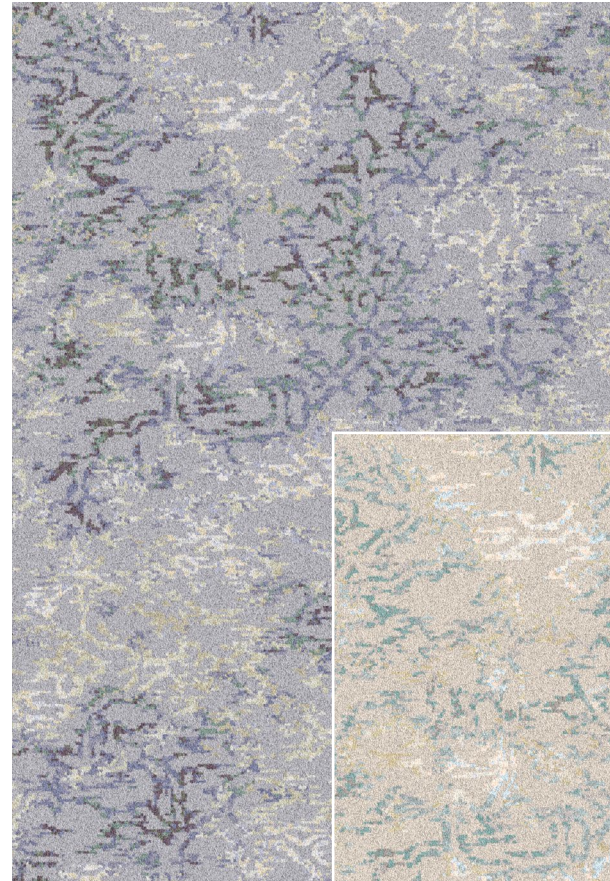
31/20103 Ocean



12/20091 Brimstone



11/20090 Ombre



93/20094 Alchemy



91/20092 Seaglass

80% wool 20% nylon - suitable for heavy wear

Widths available: 4.57m, 3.66m, 2.74m, 1.83m & 0.91m



15/20103 Savannah



11/20090 Amulet Ombre

80% wool 20% nylon - suitable for heavy wear

MINERAL

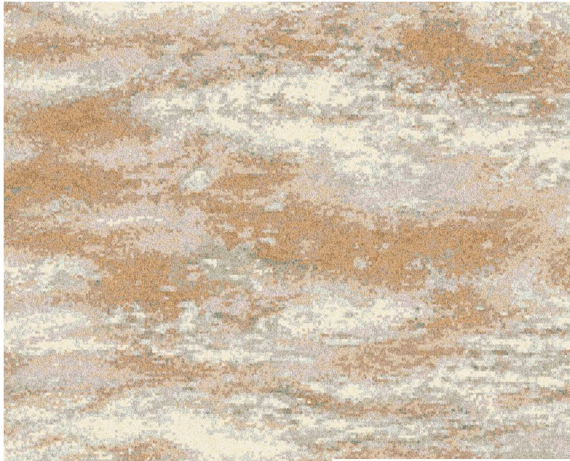
"Deliberate yet whimsical brush strokes evoke feelings of sky and water as they run and blend into the surface of the canvas."



15/20089 Mineral Savanna



92/20089 Atmosphere

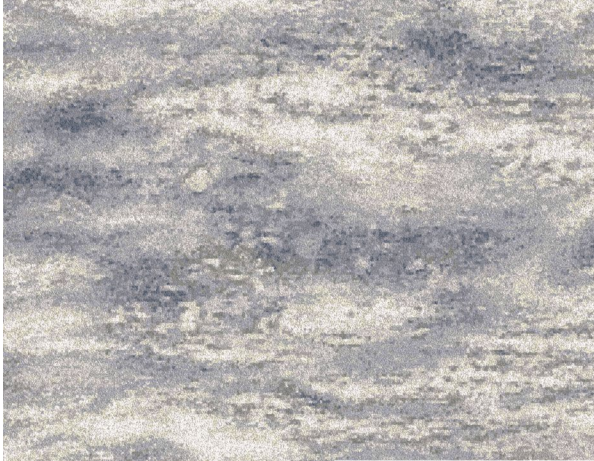


12/20089 Brimstone

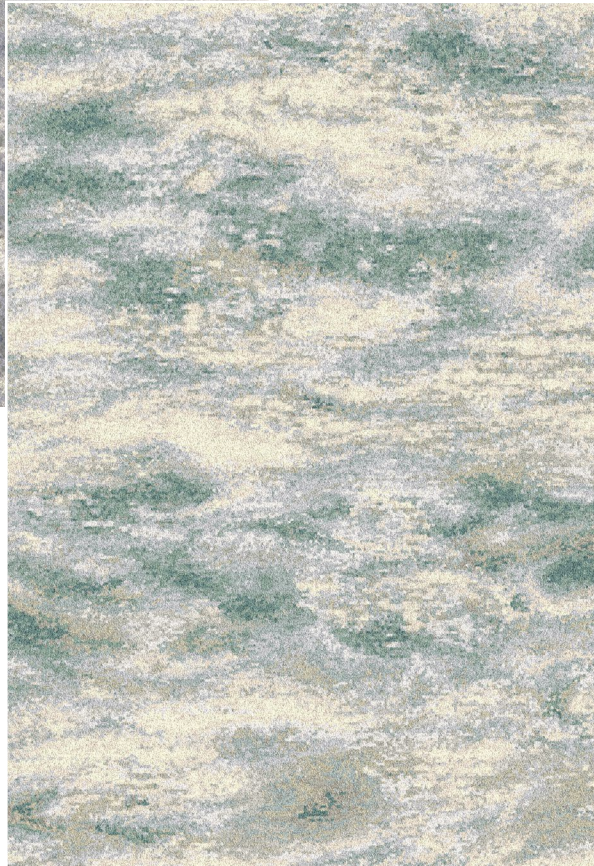


11/20089 Ombre

80% wool 20% nylon - suitable for heavy wear

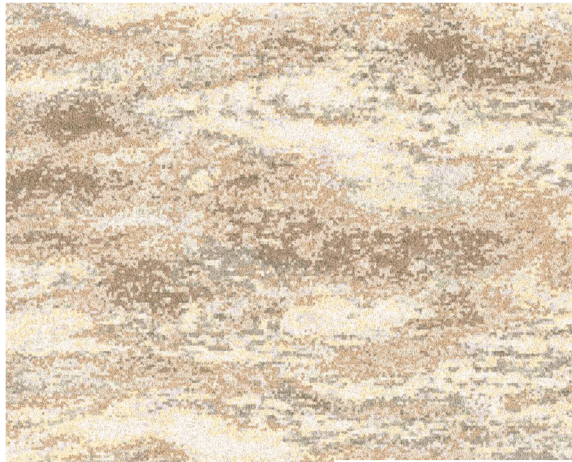


93/20089 Alchemy

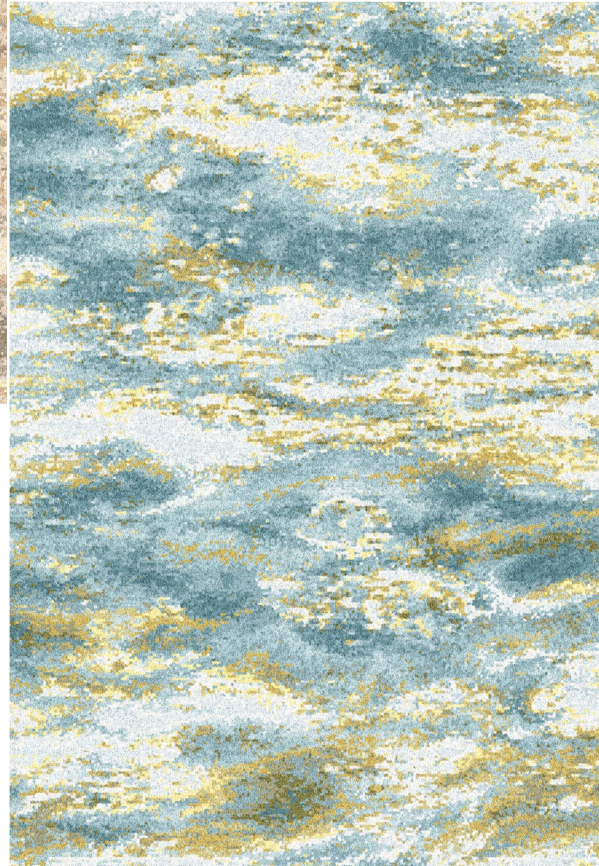


91/20089 Seaglass

Widths available: 4.57m, 3.66m, 2.74m, 1.83m & 0.91m

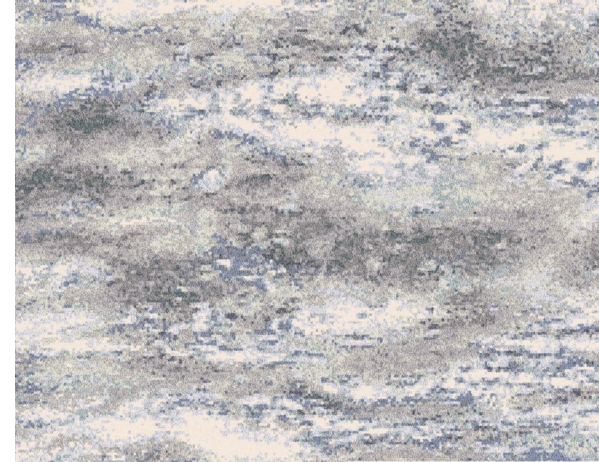


15/20089 Savannah

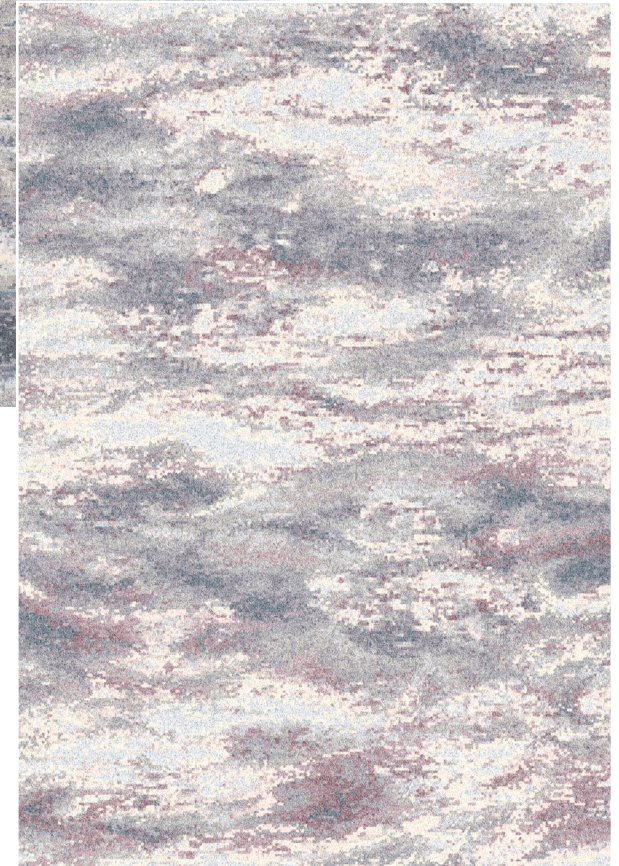


32/20089 Azores

80% wool 20% nylon - suitable for heavy wear



14/20089 Zenith



13/20089 Celeste

Widths available: 4.57m, 3.66m, 2.74m, 1.83m & 0.91m



93/20089 Mineral Alchemy



14/20089 Mineral Zenith

Technical Specs

Suitability
Heavy Contract /
Extra Heavy Domestic

Pile Yarn
80% Wool (moth-
proofed) / 20% Nylon

Widths
4,57m, 3,66m, 2,74m
1,83m & 0,91m

Pile Height
7.14mm (0.281")

Pitch
27.56 per dm (7 per
inch)

Rows
35.43 per dm (9 per
inch)

Total Pile Weight
1358g/m² (40 oz/yd²)
+/-10%

Repeat
91.4cm (36") Half Drop

Qualité
Usage commercial
intensif / Usage
domestique très

Composition du fil
80% Laine (traité à
l'antimite) / 20% Nylon

Largeurs
4,57m, 3,66m, 2,74m
1,83m & 0,91m

**Hauteur de ve-
lours** 7,14mm
au-dessus du dossier

Serrage chaîne
27,56 par 10cm

Serrage trame
35,43 par 10cm, ser-
rage 9"

**Poids total de
velours**
1358g/m² +/-10%

Raccord sauté
91,4cm

Qualität
Starke Nutzung im
Objektbereich / Sehr
starke Nutzung im

**Polzusammensetz-
ung**
80% Schurwolle

Breiten
4,57m, 3,66m, 2,74m
1,83m & 0,91m

Polhöhe
7,14mm

Kettdichte
27,56 pro 10cm

Schussdichte
35,43 pro 10cm, 9 Schuss

Poleinsatzgewicht
1358g/m² +/-10%

Rapport
91,4cm halb versetzt

Design

Amulet

Amulet

Amulet

Amulet

Amulet

Amulet

Amulet

Amulet

Mineral

Mineral

Mineral

Mineral

Mineral

Mineral

Mineral

Mineral

Mineral

Colour

Atmosphere

Alchemy

Brimstone

Ocean

Ombre

Celeste

Seaglass

Savannah

Atmosphere

Alchemy

Azores

Brimstone

Celeste

Ombre

Savannah

Seaglass

Zenith

Design Reference

92/20093

93/20094

12/20091

31/20103

11/20090

13/20103

91/20092

15/20103

92/20089

93/20089

32/20089

12/20089

13/20089

11/20089

15/20089

91/20089

14/20089



ulster™
www.ulstercarpets.com

Ulster Carpets Ltd
Castleisland Factory, Portadown, Co Armagh, BT62 1EE

T: 028 3833 4433 | www.ulstercarpets.com